

NEW

FHC Shannon Series

Frameless Pass-Thru Windows

PROFESSIONAL GRADE

FHC[®]

MANUFACTURING

- » Available Glazed With 1/4" Clear Tempered Glass or Unglazed
- » Clamp-On Top Hung Roller Assemblies Allow For Height Adjustment
- » Optional Lock Available
- » Available in Brite Anodized, Satin Anodized, Matte Black, and Dark Bronze Finishes
- » Stock and Custom Sizes Available
- » Recommended Maximum Opening Size 72" Wide x 60" High



**FRAMELESS
APPEARANCE
FOR MODERN
LOOK**



Discover the **FHC Shannon Series Frameless Pass-Thru Window**, redefining elegance in the traditional pass-thru window market. Our innovative window features "No-Hole" Clamp-On Assemblies for easy height adjustments up to 3/16", addressing varying field conditions. The sleek Double Track Header cleverly hides Roller Assemblies, eliminating the need for variance covers and ensuring a clean, modern appearance. Available in four versatile configurations, the Shannon Window accommodates diverse service scenarios. Choose from a standard Push Button Lock or a Thru-Glass Mounted Keyed Lock for enhanced security. Every window includes Rubber Bumpers, guaranteeing a gentle, soft close. Multiple finishes offered, including brite anodized, satin anodized, matte black, and dark bronze. Stock models are available pre-glazed with 1/4" clear tempered glass when a quick solution is required to complete your job. Custom size windows are available with or without glass. Contact FHC's Technical Sales for more information at **(888) 295-4531** or email at transaction@fhc-usa.com.

FHC[®]
FRAMELESS HARDWARE COMPANY

**The Glazing
Supply Company**

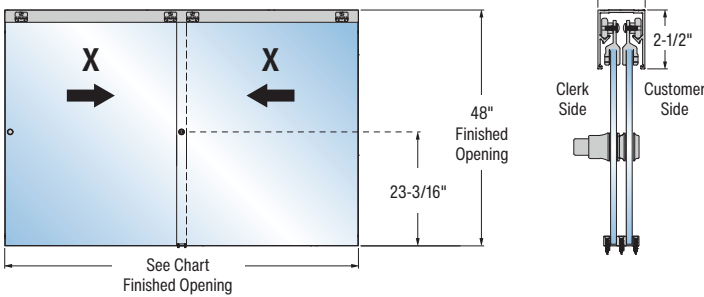
EXPERIENCE AND INNOVATION



P.O. Box 1906 South Gate, CA 90280
Toll Free **(888) 295-4531** | Fax **(323) 336-8307**
email transaction@fhc-usa.com
FHC-USA.COM

FHC Shannon Series Frameless Pass-Thru Window Configurations

Two Sliding Panels (XX)



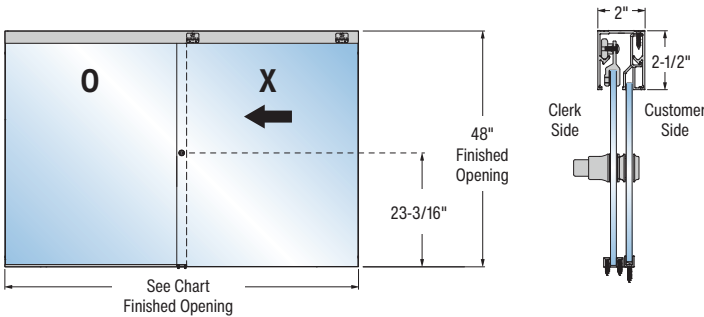
X = Sliding Panel O = Fixed Panel

FHC SHANNON SERIES TWO SLIDING PANELS		
ITEM NO.	CONFIGURATION	DESCRIPTION
SN3648XX	X X	36" x 48" Frameless Pass-Thru
SN4848XX	X X	48" x 48" Frameless Pass-Thru

*For Custom Sizes and Configurations, Contact transaction@fhc-usa.com



One Sliding Panel & One Fixed Panel (OX, XO)



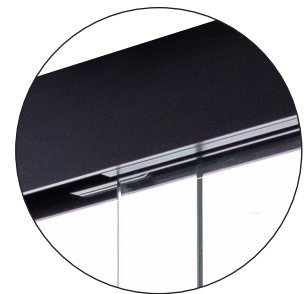
X = Sliding Panel O = Fixed Panel

FHC SHANNON SERIES ONE SLIDING PANEL & ONE FIXED PANEL		
ITEM NO.	CONFIGURATION	DESCRIPTION
SN3648OX	O X	36" x 48" Frameless Pass-Thru
SN4848OX	O X	48" x 48" Frameless Pass-Thru
SN3648XO	X O	36" x 48" Frameless Pass-Thru
SN4848XO	X O	48" x 48" Frameless Pass-Thru

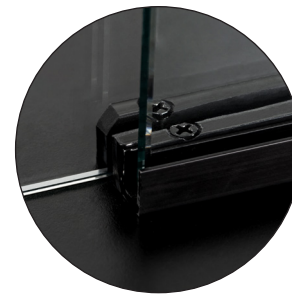
*For Custom Sizes and Configurations, Contact transaction@fhc-usa.com



Door Pull and Standard Push Button Lock (Optional Keyed Lock Available)



Overhead Track With Roller Assembly With Clamp Plate

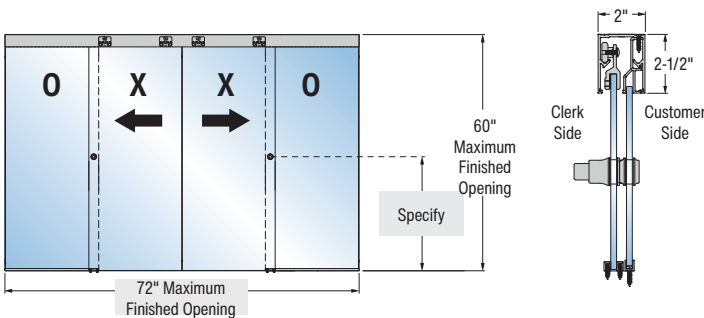


Bottom Rail and Bottom Guide



Self-Adhesive Bumper

Two Sliding Panels & Two Fixed Panels (OXXO)



X = Sliding Panel O = Fixed Panel

FHC SHANNON SERIES TWO SLIDING PANELS & TWO FIXED PANELS		
ITEM NO.	CONFIGURATION	DESCRIPTION
SN0XX0C	O X X O	Custom Per Specification

*For Custom Sizes and Configurations, Contact transaction@fhc-usa.com



Available Finishes



LIT0303 01:23:24