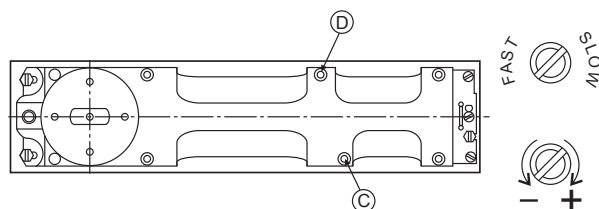
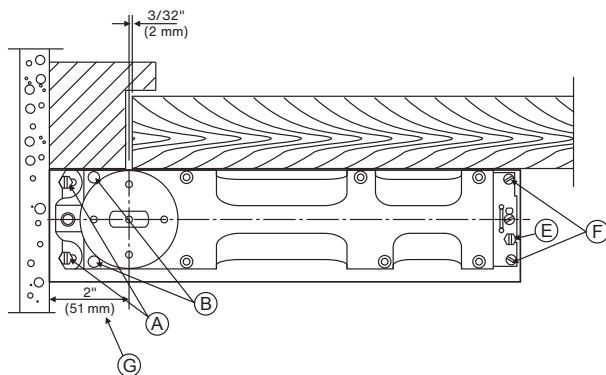
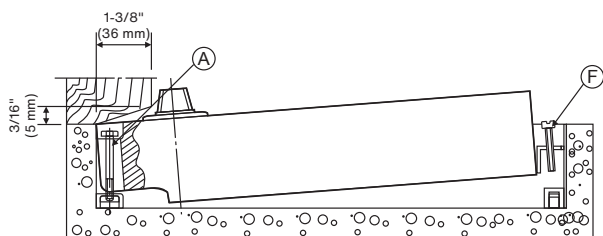


- A = Mounting Screws
 B = Height Adjustment Screws
 C = Latching Speed Valve
 D = Closing Speed Valve for Closing Speed
 E = Mounting Screws
 F = Height Adjustment Screws
 G = Spindle Backset Adjustment
 H = Changeable Spindle

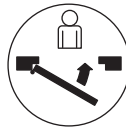
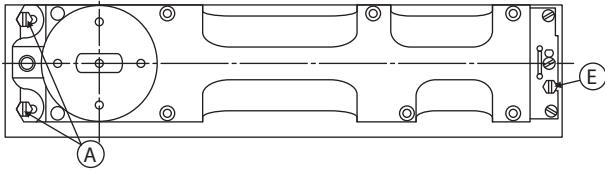


INSTALLATION

1. The cement case must be installed to allow for a pivot center-line dimension of 2-3/4" (70 mm) backset from finished door jamb. The spindle backset G can be adjusted $\pm 1/8"$ (3 mm) within cement case.
2. The cement case top must be flush with the finished floor. The closer body can be raised approximately 1/8" (3 mm) with screws B & F. **The Closer Must Remain Level.** Use the appropriate spindle size to achieve the desired clearance.
3. Adjust the closer body as required for center-hung or offset applications. Use screws A & E to secure the closer body in the cement case.
4. Hold-open: Available for 90°, 105°, or no hold open. Without hold open, the max door opening can be 180°.

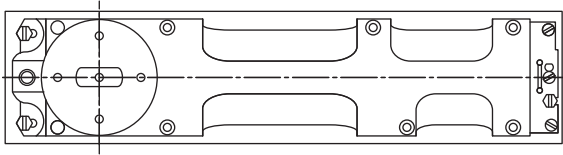
SPEED ADJUSTMENT

1. **Valve D:** Closing speed adjustable between 180° ~ 15° angle (In condition of no hold open)
2. **Valve C:** Latching speed adjustable between 15° ~ 0° angle



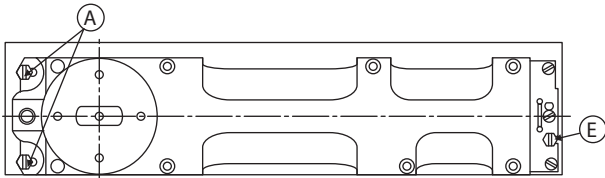
RIGHT HAND (LEFT-HAND REVERSE BEVEL)

Loosen mounting screws (A) & (E) move closer in cement box as illustrated and then secure into place.



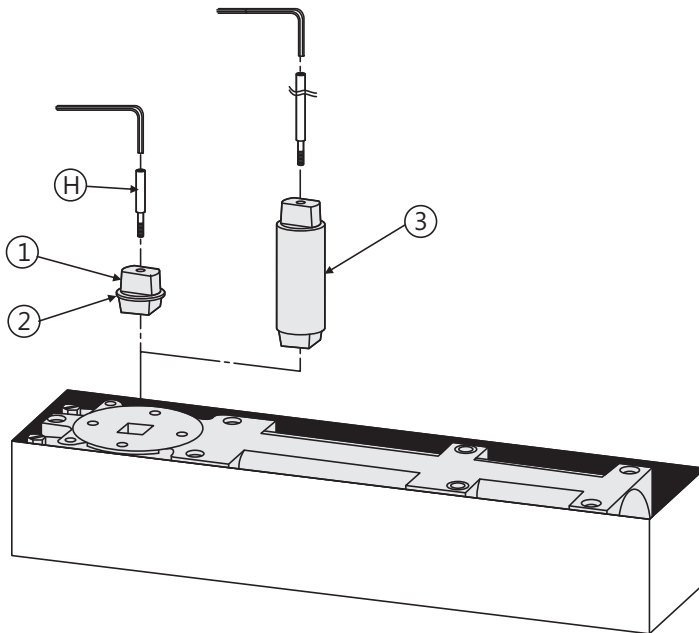
DOUBLE ACTING DOOR

Floor closer should be positioned in center of cement box and then secured into place.



LEFT HAND (RIGHT-HAND REVERSE BEVEL)

Loosen mounting screws (A) & (E) move closer in cement box as illustrated and then secure into place.



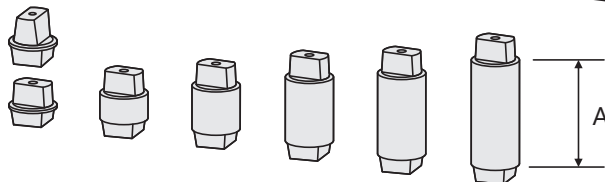
EXCHANGE OF SPINDLE INSERT

Remove screw (H) with allen wrench (5 mm) and remove standard spindle insert (1). Push dust cap (2) into groove of extended spindle insert (3). Fit extended spindle into closer and tighten securely with allen wrench (5 mm).

FHC INTERCHANGEABLE SPINDLES

ITEM NO.	COLLAR (A) HEIGHT	DOOR CLEARANCE
3040S3	*1/8" (3 mm)	5/16" (8 mm)
3040S8	5/16" (8 mm)	1/2" (13 mm)
3040S13	1/2" (13 mm)	11/16" (17 mm)
3040S18	3/4" (18 mm)	15/16" (24 mm)
3040S23	7/8" (23 mm)	1-1/16" (27 mm)
3040S28	1-1/8" (28 mm)	1-5/16" (33 mm)
3040S33	1-5/16" (33 mm)	1-7/16" (37 mm)

*Standard Spindle Supplied with Closer



For Technical Support
Call Toll Free in the U.S.
(888) 295-4531



GLAZING SUPPLIES
SHOWER DOOR HARDWARE

ARCHITECTURAL HARDWARE
RAILING HARDWARE

STOREFRONTS & ENTRANCES
TRANSACTION HARDWARE

METAL EXTRUSIONS
STORE FIXTURES

P.O. Box 1906 South Gate, CA 90280 | Toll Free: (888) 295-4531 | Fax: (323) 336-8307 | FHC-USA.COM