

FHC AR SERIES PREMIUM ALUMINUM RAILING QUOTE FORM

CUSTOMER INFORMATION

CONTACT NAME _____ DATE _____
 COMPANY NAME _____ PHONE _____
 JOB NAME _____ EMAIL _____
 JOB STATUS BID AWARDED

SELECT COLOR

- MATTE BLACK
- SILVER METALLIC
- TRAFFIC WHITE
- DARK BRONZE
- OTHER (SPECIFY): _____

RAILING HEIGHT

- 36" (915mm)
 - 42" (1067 mm)
 - OTHER (SPECIFY): _____
-  OR 
 USE ONLY MONOLITHIC TEMPERED GLASS USE ONLY LAMINATED TEMPERED GLASS

SELECT TOP RAIL PROFILE

<input type="checkbox"/> X1 ARROWHEAD SERIES  <input type="checkbox"/> X2 TAHOE SERIES  <input type="checkbox"/> X3 EVEREST SERIES 	<input type="checkbox"/> X35 EVEREST SERIES  <input type="checkbox"/> X4 EVEREST SERIES  <input type="checkbox"/> X9 SPYGLASS SERIES 
--	--

SELECT END CAPS

- STANDARD FLAT END CAP QTY: _____
- WALL MOUNT END CAP QTY: _____

SELECT QTY & TYPE OF CORNERS

- 90° QTY: _____
- 135° QTY: _____
- SPECIFY ANGLE _____ QTY: _____

Use the layout grid on the 3rd page to provide additional details of you project. → → →

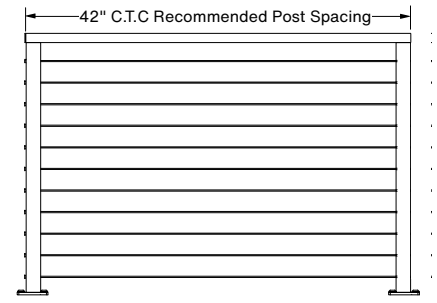
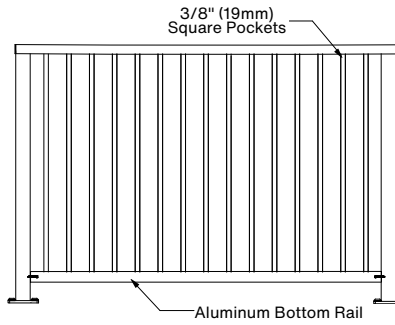
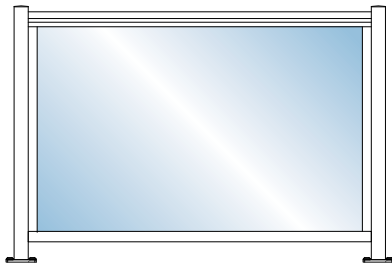
Submit the completed form to railing@fhc-usa.com or fax to: (323) 336-8307.
 One of our technical sales representatives will contact you if any further information is required.
 For any questions you can contact the FHC Railing Division at (888) 295-4531.

INFILL OPTIONS

GLASS (SELECT THICKNESS BELOW)

PICKETS

3/16" STAINLESS CABLE



- 1/4" TEMPERED - 5/16" TEMP LAMINATED
- 3/8" TEMPERED - 7/16" TEMP LAMINATED
- 1/2" TEMPERED - 9/16" TEMP LAMINATED

SELECT POST TYPE

2-3/8" SQUARE POSTS

1-1/8" 2-3/8" SLIM POSTS

QTY: _____

QTY: _____



SUBSTRATE

WOOD

CONCRETE

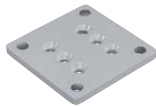
STEEL

OTHER (SPECIFY): _____

MOUNTING OPTIONS



SURFACE MOUNT (TOP OF SUBSTANCE)



STANDARD BASE PLATE

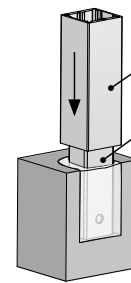
QTY: _____



SURFACE MOUNT WITH STANCHION

QTY: _____

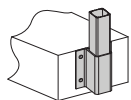
CORE MOUNT STANCHION



SP20xx
ARS 2-3/8"
SQUARE POST
CM10
CORE-MOUNT
STAINLESS STEEL
STANCHION



QTY: _____



FASCIA MOUNT (SIDE MOUNTED)



CENTER/END

QTY: _____



90° CORNER

QTY: _____ INSIDE 90°

QTY: _____ OUTSIDE 90°

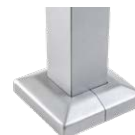


135° CORNER

QTY: _____ INSIDE 135°

QTY: _____ OUTSIDE 135°

OPTIONAL COVER PLATES



2-PIECE COVER PLATE FOR SQUARE POST

QTY: _____



2-PIECE COVER PLATE FOR OFFSET SQUARE POST

QTY: _____

Use the layout grid to provide additional details of your project.

A large rectangular area filled with a fine grid of small squares, intended for drawing or providing detailed project information.

NOTES & COMMENTS
