

FHC Aluminum Grid System

IDEAL FOR COMMERCIAL OFFICES AND CUSTOM GLASS WINE CELLARS

PROFESSIONAL GRADE

Transform Your Space Into a Modern, Industrial or Farmhouse Look

- » Field-Applied Muntins Quickly and Affordably Update any Space
- » Can Incorporate Insulating Glass Units for Added Sound and Temperature Control
- » Better Resistance to Rust and Corrosion Than Steel Systems
- » System Includes Perimeter Frames for Fixed Panels and Doors, as well as Division Bars
- » Includes Very High Bond Tape for Easy Installation
- » For Use with 3/8" or 1/2" Tempered Glass and 1" Insulated Tempered Glass
- » Available in 95" and 144" Stock Lengths
- » Matte Black Finish

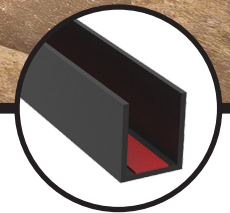
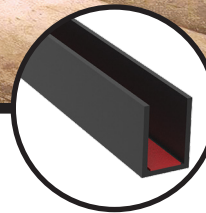


MATTE BLACK



Photos: Brandon Maestas, Baron Glass.

Compatible with all FHC glass entrances, sliders and shower systems. Contact us today to help plan your project.



The Glazing Supply Company

EXPERIENCE AND INNOVATION

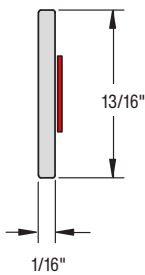


P.O. Box 1906 South Gate, CA 90280
Toll Free (888) 295-4531 | Fax (323) 336-8307
email architectural@fhc-usa.com
FHC-USA.COM

FHC Aluminum Grid System

FHC Internal Grid Division Bar

- » For Use With 3/8" or 1/2" Tempered Glass and 1" Insulated Tempered Glass
- » 95" and 144" Stock Lengths
- » Includes Very High Bond Tape
- » Can be Used for Vertical and Horizontal Layout
- » Matte Black Finish



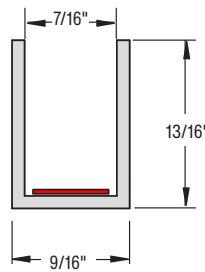
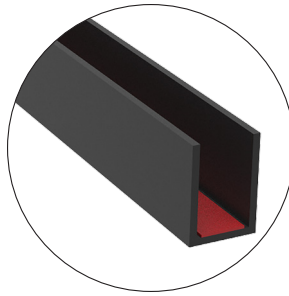
FHC Internal Grid Division Bar

ITEM NO.	DESCRIPTION
GFS95MB	95" Stock Length
GFS144MB	144" Stock Length

Minimum order: 1 each.

FHC 3/8" Perimeter Channel

- » For 3/8" Tempered Glass
- » 95" and 144" Stock Lengths
- » Includes Very High Bond Tape
- » Matte Black Finish



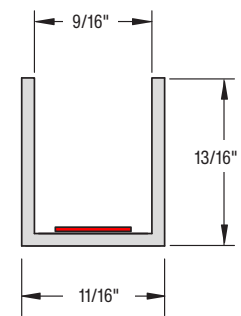
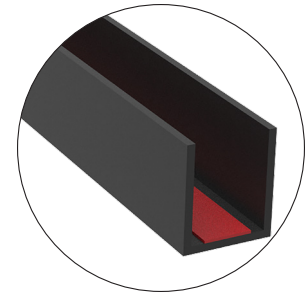
FHC Perimeter Channel For 3/8" Glass

ITEM NO.	DESCRIPTION
GUCH3895MB	95" Stock Length
GUCH38144MB	144" Stock Length

Minimum order: 1 each.

FHC 1/2" Perimeter Channel

- » For 1/2" Tempered Glass
- » 95" and 144" Stock Lengths
- » Includes Very High Bond Tape
- » Matte Black Finish



FHC Perimeter Channel For 1/2" Glass

ITEM NO.	DESCRIPTION
GUCH1295MB	95" Stock Length
GUCH12144MB	144" Stock Length

Minimum order: 1 each.

LIT0350.09.30.24

Custom Wine Cellar



Commercial Interior Office



Shower Enclosures*



*Clear Silicone Recommended When Installed on Shower Projects