

# FHC Aspire HD™

NEW

Heavy-Duty Air/Water/Structural Performance  
Thermal Glass Entrance Systems

MAIN ENTRY DOORS, STOREFRONT, AND CURTAINWALL  
APPLICATION INTEGRATION

Ultimate  
Aesthetics,  
Utmost  
Performance



CSI DIVISION 08

SECTION

08 1116

High class meets high performance. Discover the next generation of glass entrances with the **FHC Aspire HD™ (Heavy-Duty) Glass Entrance System** (U.S. Patent Numbers 11,299,928 and 11,187,323), a breakthrough in engineering that sets a new standard in terms of visual appeal, functionality, and performance. This innovative system enables architects and designers to create impressive, truly inspiring entrances up to 10 feet in height and 4 feet in width, paired with sleek 1-5/8" door stiles for a striking and elegant look that doesn't compromise on performance.

**FHC Aspire HD™** features 1" insulating glass and a distinctive full perimeter seal with stops, delivering outstanding performance and design pressure capabilities in all weather conditions throughout the year. Significant design and engineering advancements have solidified **FHC Aspire HD™**'s position as an industry-leading glass entrance solution that is sure to please architects, owners and installers alike.



The Glazing  
Supply Company

EXPERIENCE AND INNOVATION

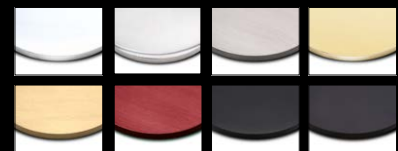


PROFESSIONAL GRADE

aspireHD™  
INSULATING GLASS ENTRANCE SYSTEMS

HERE'S WHY ARCHITECTS AND  
DESIGNERS SPECIFY ASPIRE™ HD  
HEAVY-DUTY ENTRANCES

- » Award Winning U-Factors as Low as 0.37
- » Industry-Leading, Very Narrow 1-1/8" Wide Vertical Door Stiles and x 2-1/2" System Depth Complete the Heavy Glass Door Look. Stiles Utilize Our Patent Pending Clamping Mechanism and Unitizing Gaskets, for Fast Installations and Durability
- » Supports 1" Dual-Glazed Insulating Glass
- » Compatible with all High-Solar and Thermal Efficient Glass Types
- » Full Perimeter Stops and Seals for Exceptional Air, Water, and Acoustic Performance
- » NFRC Rated and California Title 24 Compliant
- » Door System Can be Configured with Continuous Gear Hinge or Offset Pivots for Compatibility with Any Storefront Entrance System
- » Maximum Door Weight - 400 lb
- » Maximum Door Size: 48" Wide and 120" Tall
- » Next Level Thermal Efficiency Provided by Thermally Broken Door Rails, Vertical Door Stiles, and ADA Compliant Threshold. Utilizes High Performance Polyamide Strut Thermal Barriers Between the Inside and Outside Aluminum Extrusion Members
- » Unlike Bulky, Traditional Thermal Doors, Aspire's Door Handle Hardware Connects Directly to the Glass, Producing a Heavy Glass Door Appearance. Enabled by Specialized Thru-Glass Hole Spacers That Create a Durable Seal Between the Insulating Glass Lites with a P.I.B. Primary Seal and Silicone Secondary Seal
- » Rugged Stainless-Steel Corner Joinery Will Maintain Door Integrity in High Traffic Applications
- » Aspire Door Rails Feature Our Unitizing Gasket and Clamping Force Control Mechanism that Protects the Insulating Glass Edge Seal
- » Integrated Air and Water Infiltration Management
- » Available in Standard and Custom Clad Finishes



P.O. Box 1906. South Gate, CA 90280

Toll Free (888) 295-4531 | Fax (323) 336-8307

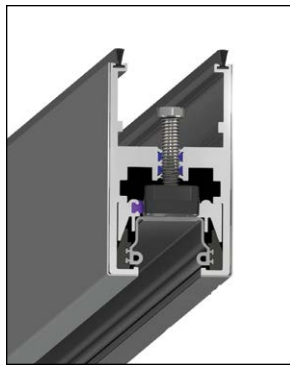
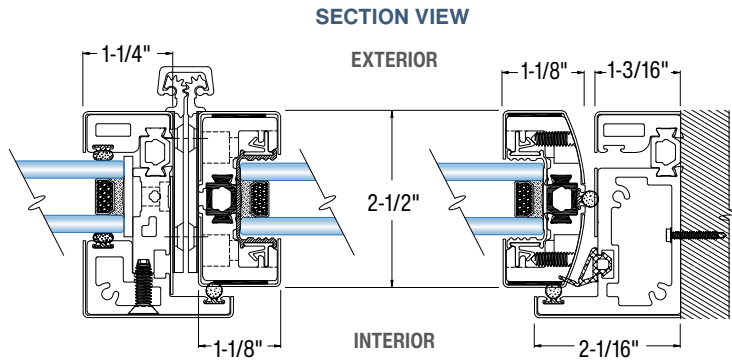
email [architectural@fhc-usa.com](mailto:architectural@fhc-usa.com)

[FHC-USA.COM](http://FHC-USA.COM)

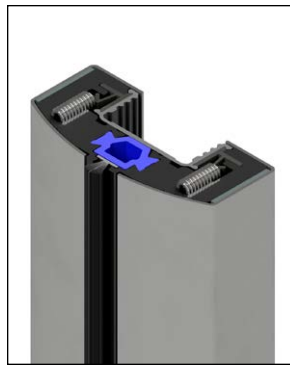
# FHC Aspire HD™ Heavy-Duty Air/Water/Structural Performance Thermal Glass Entrance Systems



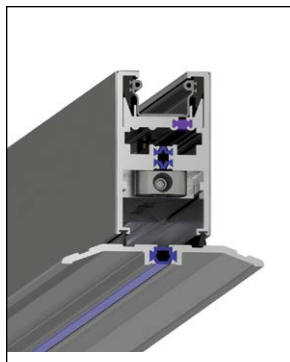
- Glass Clamp with Clamping Force Control Element
- Clamp Action Set Screws
- Unitizing Gasket
- Silicone Bulb Seal
- Polyamide Strut Thermal Barrier
- 6063 T-6 Aluminum Housing
- Cladding
- Very High-Bond Tape
- Perimeter Glass Stops with Seals
- Continuous Gear Hinge (Offset Pivot Hinge Option)



Aspire™ 4" Top Door Rail with Door Adjustment Screw



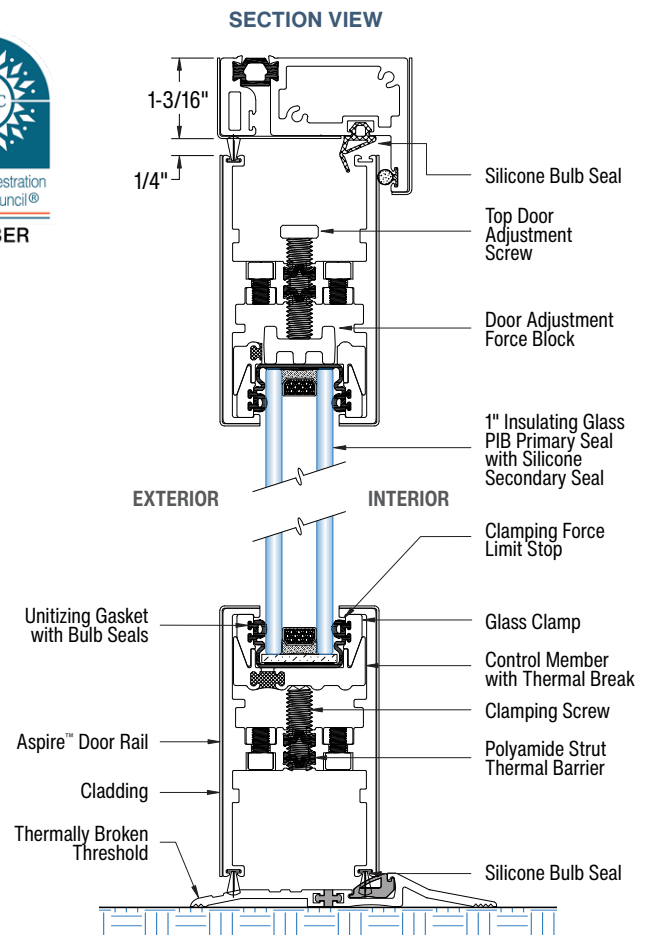
Aspire™ Vertical Door Stile Assembly



Aspire™ 4" Bottom Door Rail and Threshold



Aspire™ 10" Bottom Door Rail and Threshold



FHC ASPIRE HD™ INSULATING GLASS ENTRANCE SYSTEMS

ITEM NO.	DESCRIPTION	MAXIMUM RECOMMENDED DOOR SIZE
AHD44XXC	Door With 4" Top and 4" Bottom Door Rails	36" W x 120" H - 23 PSF Wind Load
AHD410XXC	Door With 4" Top and 10" Bottom Door Rails	42" W x 111" H - 25 PSF Wind Load
		48" W x 108" H - 24 PSF Wind Load

XX = FINISH

## Available Finishes



LIT0385 REV. 09.23.24