

FHC Classic 140 Series Single Sliding Door Kit

Top Hung Single Sliding Door Kit Wall or Ceiling Mount



- Single Panel Slider Kit for Both Wall and Ceiling Mount Applications
- Max. Door Weight 310 lbs for Use With 3/8", 1/2", or 3/4" Glass
- Available in Two Finishes, Satin Anodized and Matte Black
- Clamp Covers and End Caps Completely Conceal the Mechanism
- ± 1/8" Adjustable Wall Brackets
- Glass Fabrication Not Required
- Ball Bearing Rollers for Smooth Operation



CSI DIVISION 08
SECTION
08 3200



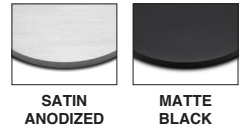
Use Only Monolithic Tempered Glass

FHC CLASSIC 140 SINGLE SLIDING DOOR KIT

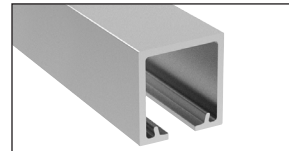
ITEM NO.	FINISH
CL140SA	Satin Anodized
CL140MB	Matte Black

Kits Include: 118" (3 m) stock lengths and must ship common carrier.

Available Finishes



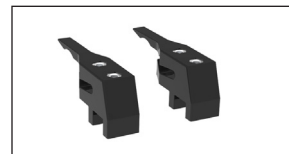
Kits Include the Following Components:



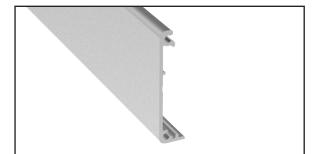
ITEM NO. **CL140EXT**
One Top Track 118" in Length



ITEM NO. **CL140RLRS**
Two Hanger/Roller Assemblies



ITEM NO. **CL140STP**
One Set of Roller Stops



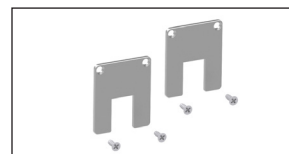
ITEM NO. **CL140CVR**
One Clamp Cover at 118" in Length (Field Cut)



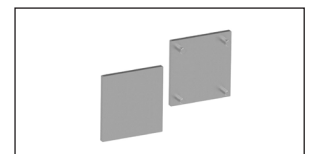
ITEM NO. **CL140BKT**
Fifteen Top Track Support Brackets



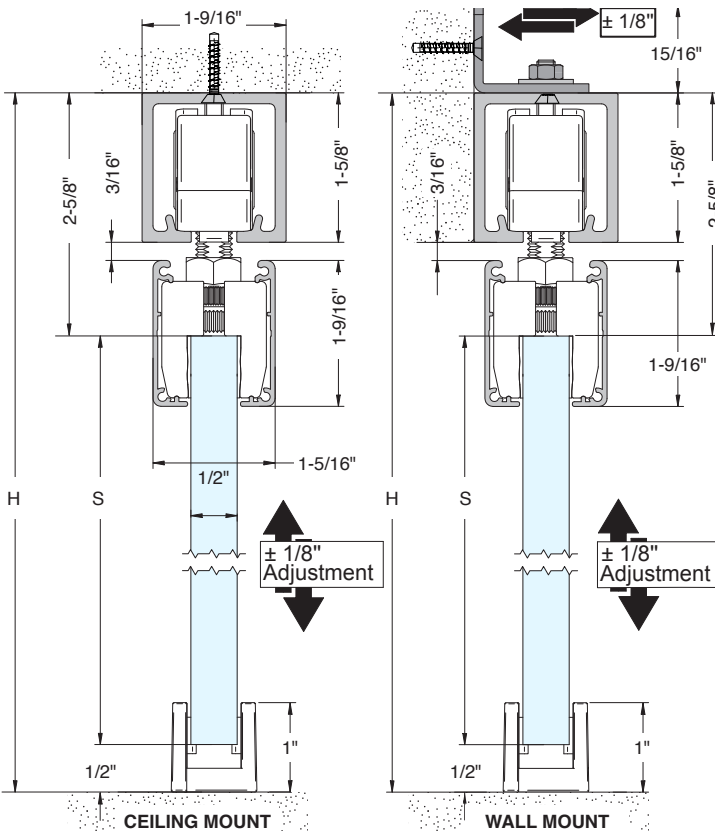
ITEM NO. **CL140GD**
One Bottom Floor Guide



ITEM NO. **CL14012** (for 3/8" & 1/2" Glass)
ITEM NO. **CL14020** (for 3/4" Glass)
One Set of Hanger End Caps



ITEM NO. **CL140EC**
One Set of Top Track End Caps



Slider Panel (S) Glass Deducts = Height (H) Minus 3-1/8"

Slider Panel (S) Glass Deducts = Height (H) Minus 3-1/8"

EXPERIENCE AND INNOVATION



FRAMELESS HARDWARE COMPANY
THE GLAZING SUPPLY COMPANY

P.O. Box 1906, South Gate, CA 90280 Toll Free: (888) 295-4531 | Fax: (323) 336-8307 | Web: fhc-usa.com