

American
Manufacturing

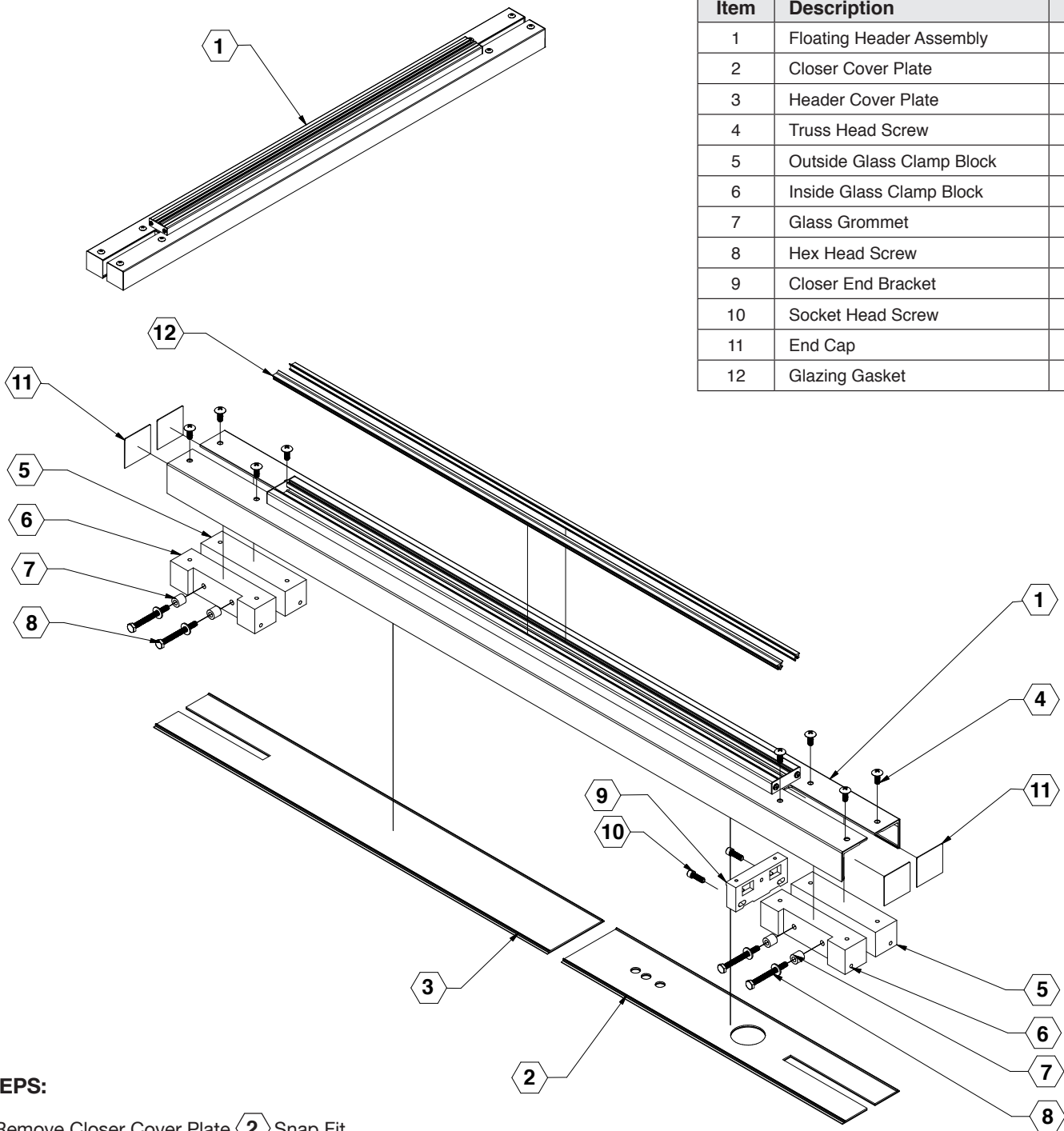


USE ONLY
MONOLITHIC
TEMPERED
GLASS



- In Stock Clad and Non-Clad Finishes
- In House Custom Lengths and Fabrication Available
- Stocked in 4" and 4-1/2" Profiles, 36" and 72" Long
- Custom Sizes and Finishes Also Available
- Snap In Cover Plates Included
- Many Architectural Finishes to Select From
- Standard 2-3/4" Pivot Points
- Glass to Glass Attachment

Item	Description	Qty.
1	Floating Header Assembly	1
2	Closer Cover Plate	1
3	Header Cover Plate	1
4	Truss Head Screw	8
5	Outside Glass Clamp Block	2
6	Inside Glass Clamp Block	2
7	Glass Grommet	4
8	Hex Head Screw	4
9	Closer End Bracket	1
10	Socket Head Screw	2
11	End Cap	4
12	Glazing Gasket	2



STEPS:

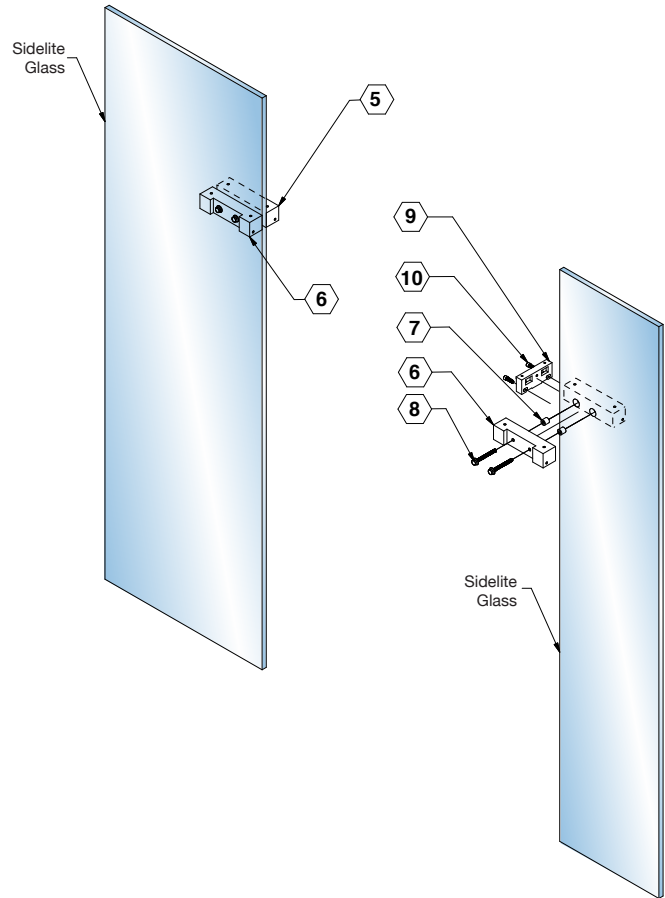
1. Remove Closer Cover Plate (2) Snap Fit.
2. Remove Header Cover Plate (3) Snap Fit.
3. Remove Eight Truss Head Screws (4) From Top of Header, Releasing the Two Glass Clamp Block Assemblies.
4. Remove Two Socket Head Screws (10) From End of Glass Clamp Block, Releasing the Closer End Bracket (9).
5. Remove Four Hex Head Screws (8) From Inside Glass Clamp Blocks (6). Careful to Retain the Four Glass Grommets (7).
Separate Glass Clamp Blocks (5) and (6).



NOTE: These Instructions Show Single Door Installation.
For Double Door Installation, Include Closer at Both Ends.

STEPS:

6. Insert Glass Grommets **7** Into Holes in Glass.
7. Align Outside and Inside Glass Clamp Blocks **5** and **6** with Holes and Secure with Hex Head Screws **8**. Do Not Tighten Screws. Repeat on Opposite Side.
8. Attached Closer End Bracket **9** to Glass Clamp Block With Socket Head Screws **10**. Do Not Tighten Screws.
9. Using a Level, Align Glass Clamp Blocks **5** and **6** and Tighten Hex Head Screws **8**.
10. Tighten Socket Head Screws **10** Securing Closer End Bracket.



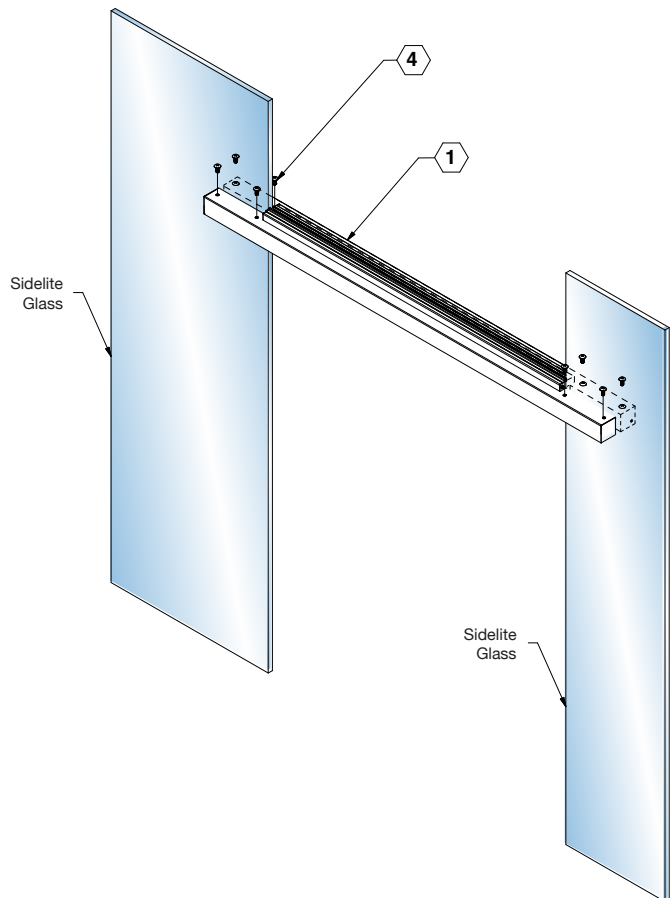
Item	Description	Qty.
5	Outside Glass Clamp Block	2
6	Inside Glass Clamp Block	2
7	Glass Grommet	4
8	Hex Head Screw	4
9	Closer End Bracket	1
10	Socket Head Screw	2

STEPS:

11. Install Floating Header **1** onto the Glass Clamp Blocks **5** and **6**. Align Screw Holes.
12. Secure Floating Header Onto Glass Clamp Blocks Using Truss Head Screws **4**.



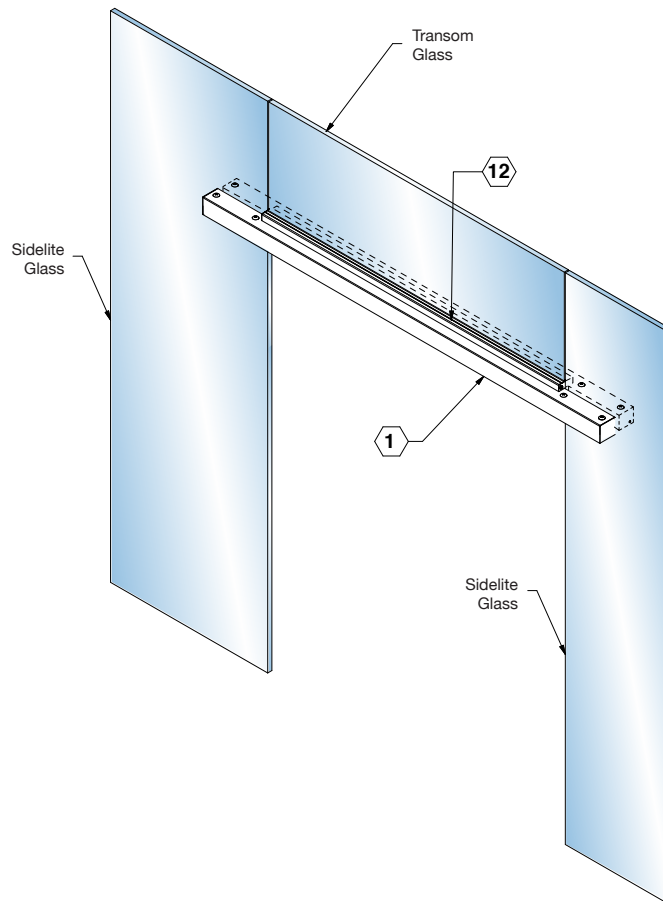
Note: If Minor Adjustment of the Glass Clamp Blocks is Required, Access to the Hex Bolts is Available from Below.



Item	Description	Qty.
1	Floating Header Assembly	1
4	Truss Head Screw	8

STEPS:

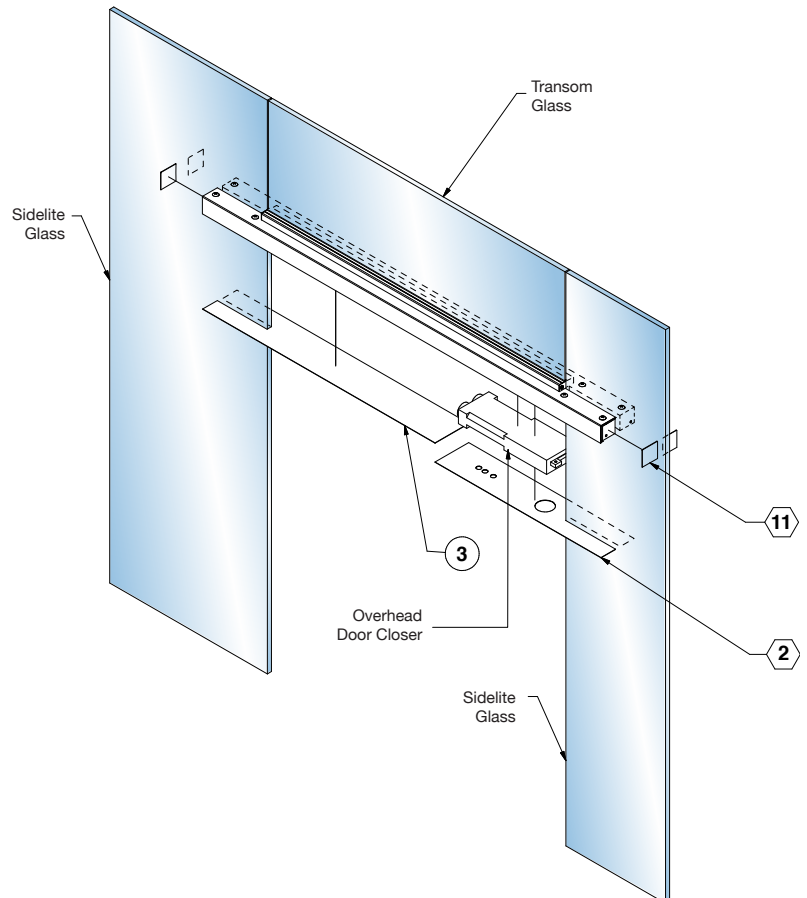
- 13. Verify That Setting Blocks are Installed into Top Header Channel.
- 14. Install Transom Glass into Header Channel. Secure with Glazing Gasket **12** Inside and Out.



Item	Description	Qty.
1	Floating Header Assembly	1
12	Glazing Gaskets	2

STEPS:

- 15. Install Overhead Door Closer (Sold Separately) to Closer End Bracket. See Closer Installation Instructions.
- 16. Install Snap Fit Closer Cover Plate **2** and Snap Fit Header Cover Plate **3**.
- 17. Install Four End Caps **11** by Removing Backing Paper from Hi-Bond Tape and Press onto the Ends of the Header.

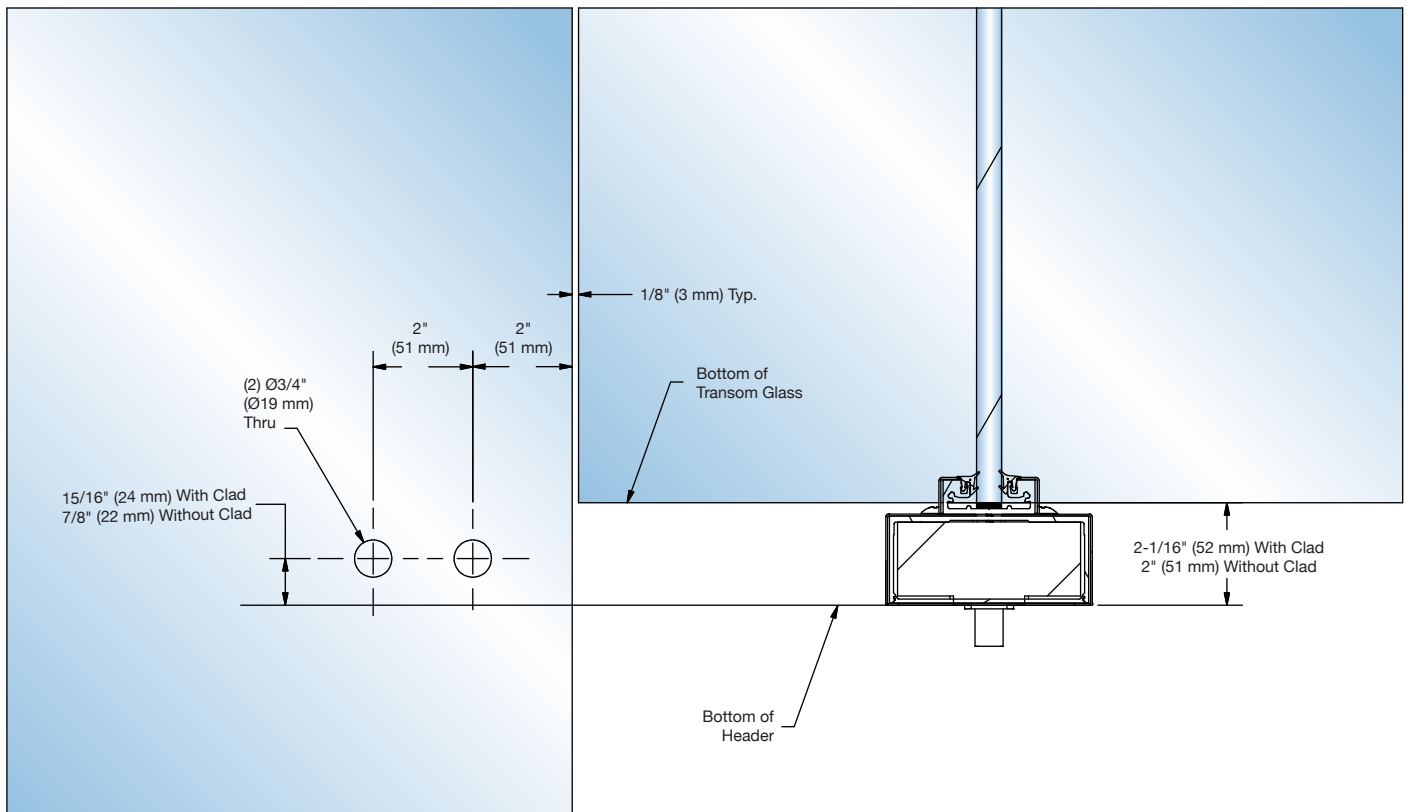


Item	Description	Qty.
2	Closer Cover Plate	1
3	Header Cover Plate	1
11	End Cap	4

Floating Header Series HF45 and HF4 Sidelite Glass Prep



DO NOT MEASURE / SCALE DRAWING
USE DIMENSIONS SHOWN



GLAZING SUPPLIES
SHOWER DOOR HARDWARE

ARCHITECTURAL HARDWARE
RAILING HARDWARE

TRANSACTION HARDWARE
METAL EXTRUSIONS

4361 Firestone Blvd. South Gate, CA 90208 | Toll Free: (888) 295-4531 | Fax: (323) 336-8307 | fhc-usa.com