

FHC P2 Series

Concealed Vertical Rod Panic Exit Device

Routing Installation Instructions

FHC P2 Series Routing Instructions

ROUTING INSTRUCTIONS:

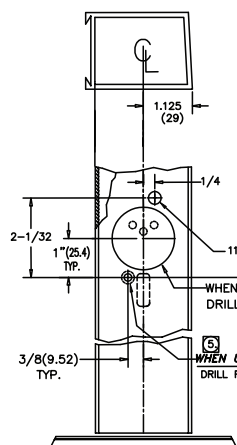
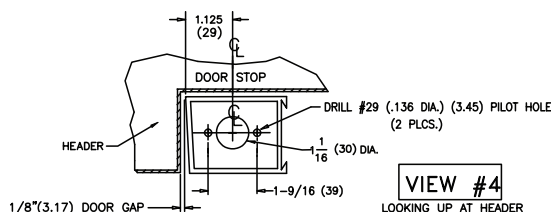
1. PREPARE INSIDE FACE (PANIC SIDE) OF ACTIVE STILE PER VIEW #1 & TEMPLATE 10-942.
2. PREPARE INSIDE FACE (PANIC SIDE) OF HINGE STILE PER VIEW #2 & TABLE "A".
3. PREPARE THRESHOLD PER VIEW #3.
4. PREPARE HEADER PER VIEW #4.
5. IF CYLINDER OR TRIM IS BEING USED, SEE DRILL TEMPLATE NO. 10-956 OR 10-987 WITH TRIM AS APPROPRIATE.
6. FOR MOUNTING AND ADJUSTMENTS OF THE 1285 SEE OPPOSITE SIDE THIS PAGE.

RECOMMENDATIONS FOR MAINTENANCE:

IT IS RECOMMENDED THAT THE FOLLOWING ROUTINE MAINTENANCE CHECKS SHOULD BE TAKEN AT INTERVALS OF NOT MORE THAN ONE MONTH BY THE OCCUPIER OR HIS APPROVED REPRESENTATIVE:

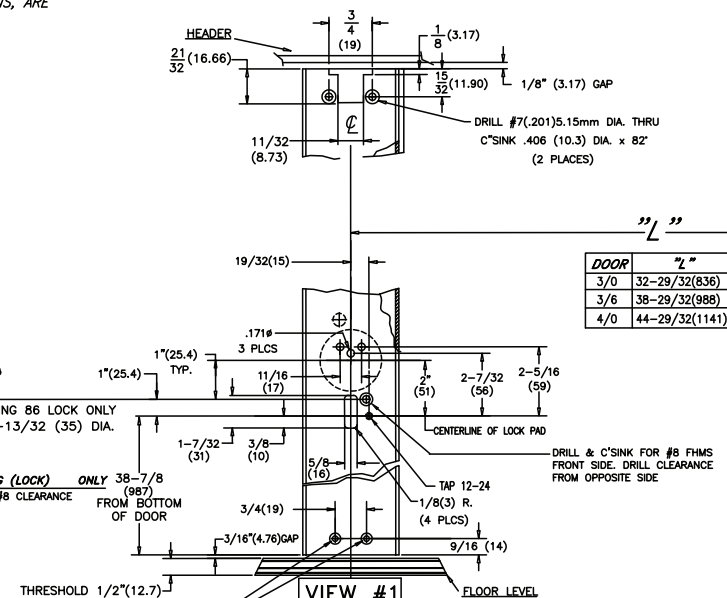
- A) INSPECT AND OPERATE THE PANIC DEVICE TO ENSURE THAT ALL COMPONENTS ARE IN A SATISFACTORY WORKING CONDITION;
- B) ENSURE THAT THE KEEPER(S) IS (ARE) FREE FROM OBSTRUCTION

'THE SAFETY FEATURES OF THIS PRODUCT ARE ESSENTIAL TO IT'S COMPLIANCE WITH EN 1125. NO MODIFICATION OF ANY KIND, OTHER THAN THOSE DESCRIBED IN THESE INSTRUCTIONS, ARE PERMITTED'



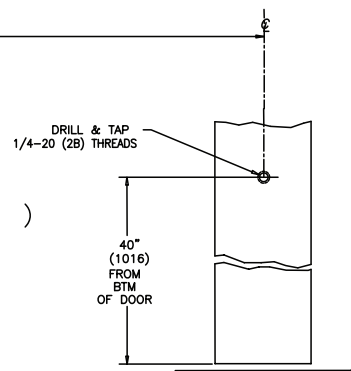
VIEW #5

OUTSIDE (LOCK SIDE) OF ACTIVE
DOOR STILE SHOWING PREP.
WHEN USING LOCK CYLINDER
MOUNTING PAD.



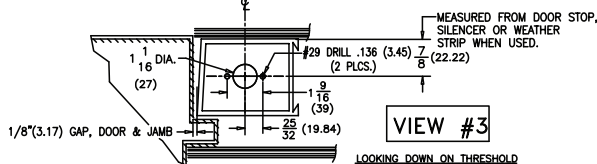
VIEW #1

DRILL & C'SINK FOR -
10-32x1/2(13) SELF-TAP SCR.
(2 PLCS.)



VIEW #2

HINGE SIDE VERTICAL STILE
PANIC SIDE



VIEW #3

LOOKING DOWN ON THRESHOLD