

FHC P2 Series Rim Panic Exit Device "S" Strike Installation Instructions

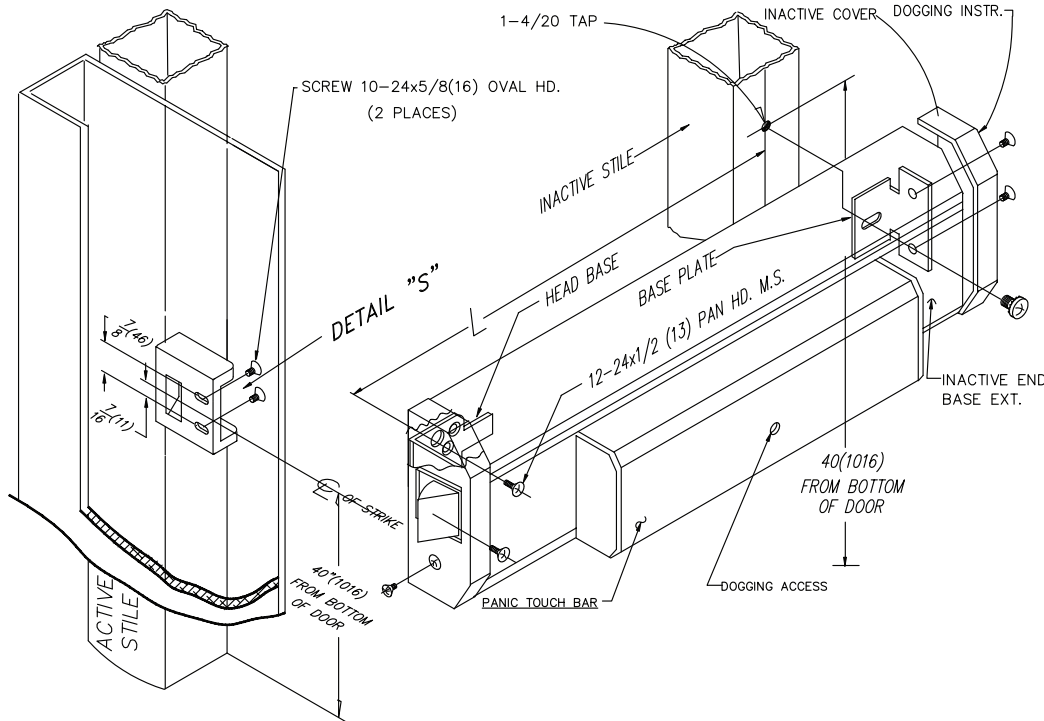
FHC P2 Series "S" Strike Mounting Instructions

MOUNTING INSTRUCTIONS:

1. PREPARE LOCK STILE PER TEMPLATE NO. 10-935 DRILL CYLINDER MOUNTING HOLES IF REQUIRED.
2. LOCATE CENTERLINE OF CYLINDER ON EXTERIOR OF DOOR AND DRILL IF REQUIRED.
3. TRIM TAIL PIECE TO FIT INTO PANIC DRIVE BUSHING ASSEMBLY.
4. MOUNT CYLINDER AND SECURE WITH MOUNTING SCREWS (SUPPLIED BY LOCK MFG.) IF TRIM IS REQ'D PREP. PER 10-997
6. LOCATE MOUNTING HOLE ON INACTIVE STILE DRILL & TAP 1/4-20 THDS. 40"(1016) FROM BTM. OF DOOR.

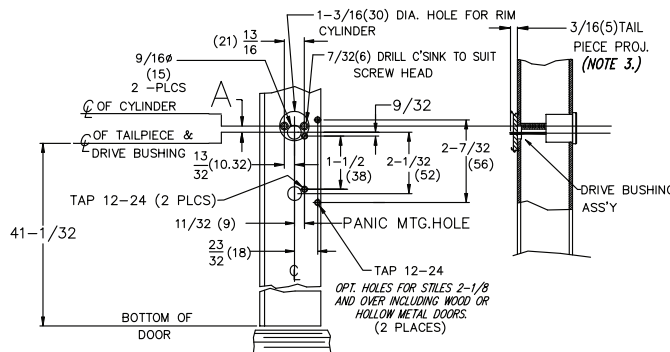
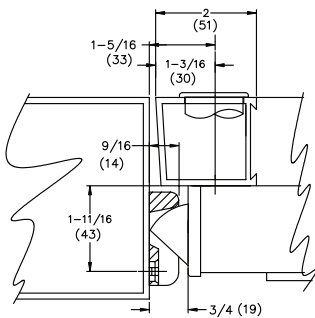
7. PANIC ATTACHMENT

- REMOVE FRONT AND REAR END BASE COVERS BY RELEASING 6-32 x 3/16(5) FLAT HD. SCREWS. SECURE ACTIVE END OF PANIC BY INSTALLING 2 EACH 12-24x1/2(13) PAN HD.M.S. SECURE INACTIVE END WITH SINGLE 1/4-20x1/2(13) ROUND HD. M.S. (PHIL.) WITH SEMS THROUGH INACTIVE BASE PLATE. PROCEED BY RE-INSTALLING BASE COVERS ON EACH END OF PANIC BASE.
- XT. 8. TO INSTALL STRIKE LOCATE 10-24 TAPS ON ACTIVE STILE (2 PLACES).
 9. MOUNT AND SECURE STRIKE. (REF. DETAIL "S")
 10. CHECK OPERATION OF ALL PARTS INCLUDING CYLINDER IF BEING USED TO ASSURE PROPER OPERATION.



DOGGING INSTRUCTIONS:

- TO DOG—INSERT HEX. KEY TURN CLOCKWISE UNTIL IT STOPS, FULLY DEPRESS TOUCH BAR THEN RELEASE.
- TO UNDOG—INSERT HEX KEY TURN CLOCKWISE UNTIL IT STOPS, TOUCH BAR WILL RELEASE.



FUNCTIONAL CYLINDERS	A	DOOR OPENING	L
ILCO		36"(914)	33"(838)
LOCKWOOD		42"(1067)	39"(991)
YALE		48"(1219)	45"(1143)
CORBIN	1/4" (6)		
SCHLAGE			
RUSSWIN			
WELCH			
KEIL			
SARGENT	3/8" (10)		