

General Notes

Actual Dimension
24"(W) x 38-1/2"(H)

Service Opening
16"(W) x 32"(H)

Rough Opening
24-3/8"(W) x 38-7/8"(H)

QUIKSERV
11441 BRITTMOORE PARK DR.
HOUSTON, TX., 77041

NOTE: THIS DRAWING EMBODIES A CONFIDENTIAL PROPRIETY DESIGN ORIGINATED AND OWNED BY QUIKSERV CORP., AND IS SUBMITTED UNDER A CONFIDENTIAL RELATIONS ALL PATENT, MANUFACTURING, SALE RIGHTS REGARDING THE SAME ARE RESERVED EXCEPT TO THE EXTENT RIGHTS ARE EXPRESSLY GRANTED TO OTHERS. THE RECIPIENT AGREES BY ACCEPTING HIP. THESE DRAWINGS NOT TO SUPPLY OR DISCLOSE ANY INFORMATION REGARDING THEM TO ANY UNAUTHORIZED PERSON.

TITLE:

MANUAL WINDOW BI-FOLD DOOR

Drawing Name

CM-1 THREE SIDE VIEW

DATE

3/22/2016

DRAWN BY

RBV

SCALE

1:8

SHEET

1 of 4

SIZE

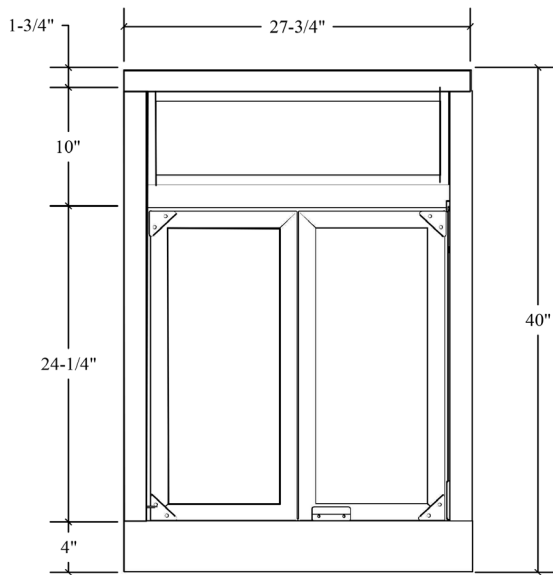
A

MODEL PW3-16 & PW4-16

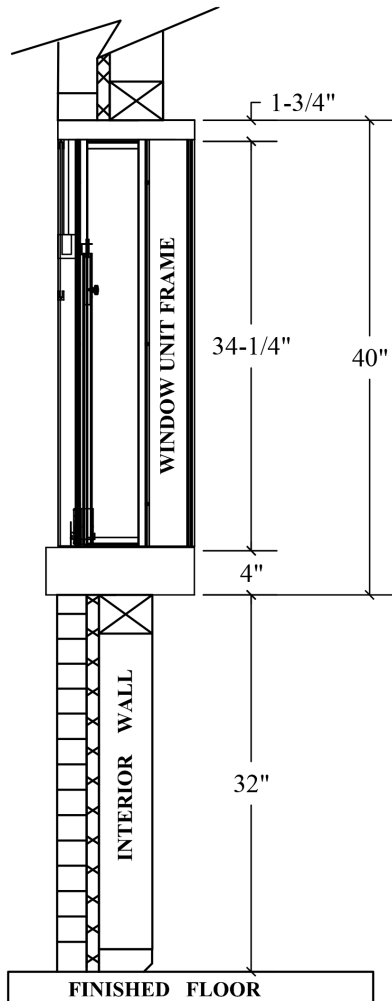
ROUGH OPENING: 28-1/8"(w) x 40-3/8"(h)

SERVICE OPENING: PW3-16 20"(w) x 18-1/4"(h)
PW4-16 20"(w) x 24-1/4"(h)

MAIN VIEW



SIDE VIEW

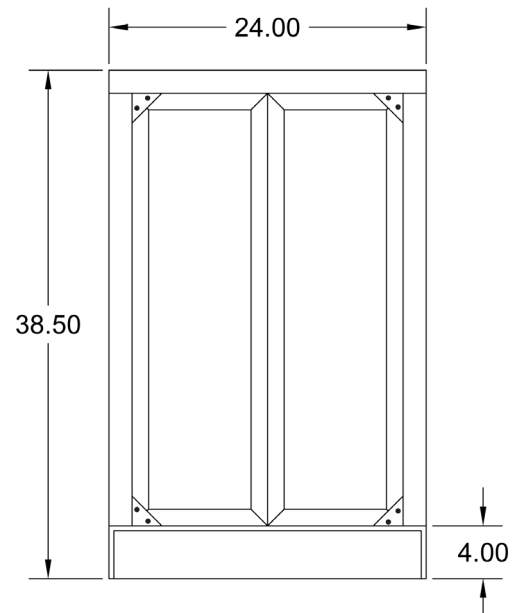


MODEL CM-1

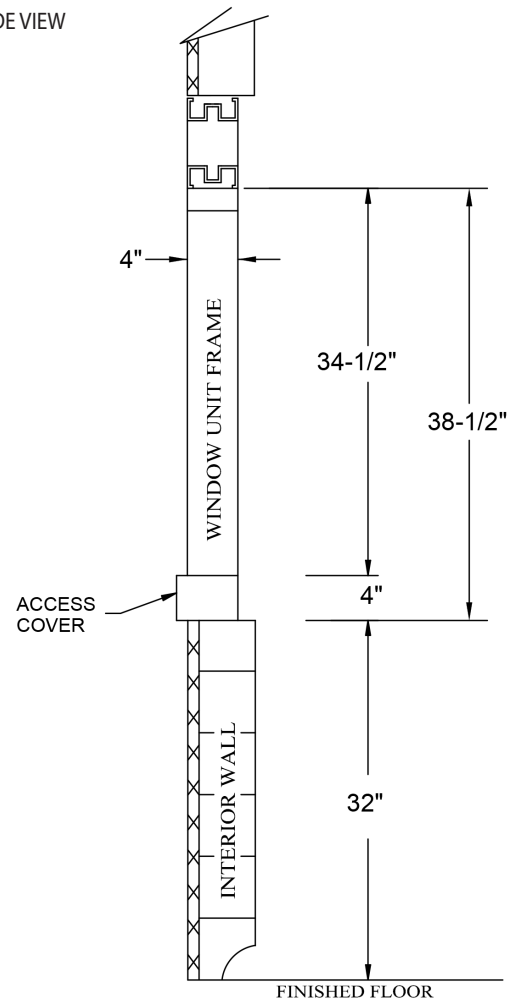
ROUGH OPENING: 24-3/8"(w) x 38-7/8"(h)

SERVICE OPENING: 16" (w) x 32" (h)

MAIN VIEW



SIDE VIEW



ALL QUIKSERV PRODUCTS ARE SHIPPED FULLY-ASSEMBLED and READY TO INSTALL. EACH ELECTRICAL UNIT IS SHIPPED WITH A FOUR FOOT (4') BX DROP.