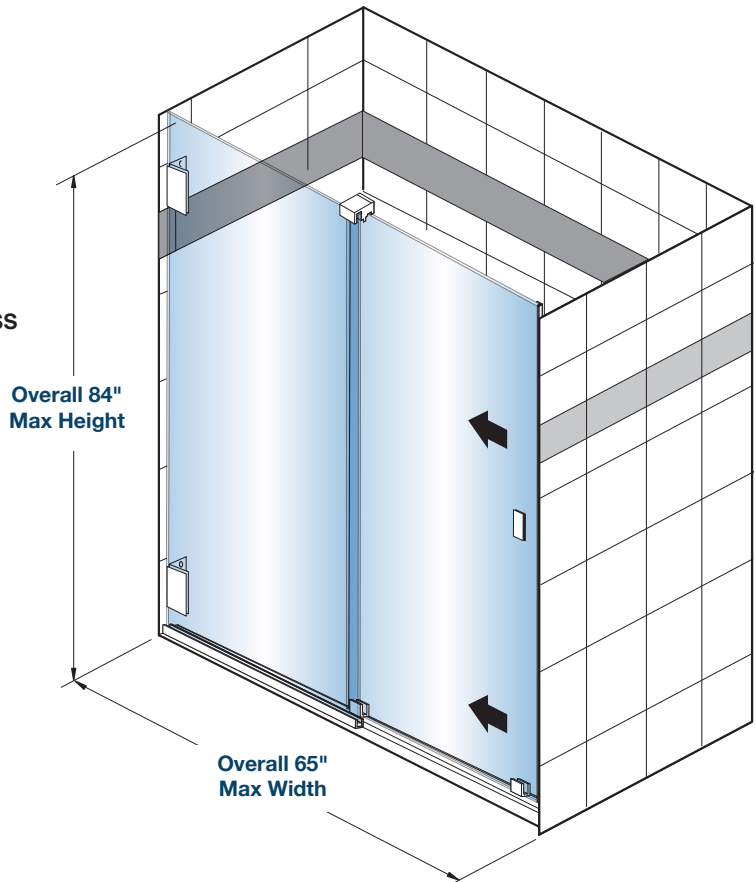
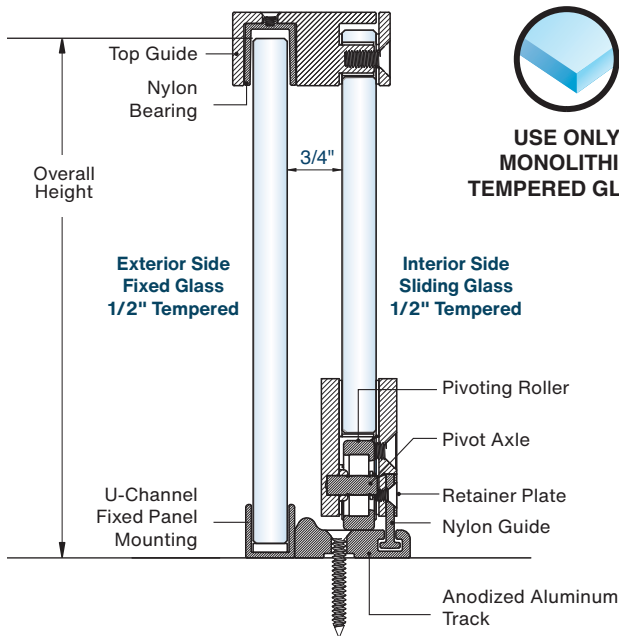


RIDGELINE SERIES FRAMELESS SLIDING SHOWER DOOR KIT

- Designed for Use with 1/2" (12 mm) Tempered Glass
- Wall Mounted Glass Brackets and Door Pull Sold Separately
- Square and Round Hardware Options Available

Our **Ridgeline Series Shower Door Kit** uses a bottom track to present a Header-Free appearance. Our Patent Pending bottom track design sheds water back inside the shower. Bottom rollers allow for wider heavier doors than most top rolling systems.

Section View of Ridgeline Rolling Shower Kit



SPECIFICATIONS

Material: Aluminum Bottom Track and U-Channel Brass Rollers and Top Guide
Glass Thickness: 1/2" (12 mm) (Glass is not Included)
Glass Fabrication: Each Roller gets an Edge Notch, Top Guide gets (2) Slot Cuts
Maximum Slider Height: 84"
Maximum Slider Weight: 136 lbs.

RIDGELINE SERIES KITS

ROUND ROLLER ITEM NO.	SQUARE ROLLER ITEM NO.	FINISH
RLRD180CH	RLSQ180CH	Polished Chrome
RLRD180BN	RLSQ180BN	Brushed Nickel
RLRD180MB	RLSQ180MB	Matte Black
RLRD180SB	RLSQ180SB	Satin Brass

Minimum order: 1 each.

Cutting Instructions/ Glass Sizing for Ridgeline Series Kit

IMPORTANT NOTE: Sliding Panel Must be Installed on the inside, Fixed Panel on the Outside.

NOTE: The Overall Height is referenced/determined from top of curb to top of Fixed/Sliding Panel

METAL SIZE CUTTING FORMULA:

Bottom Track = Bottom Overall Width Measurement Less 1/16"

GLASS SIZE FORMULAS TO DETERMINE NET WIDTH AND HEIGHT:

Sliding Panel Width = Overall Width Divided by 2, Add 2-7/8"
 Fixed Panel Width = Overall Width Divided by 2, Subtract 1/8"
 Sliding Panel Height = Overall Height Minus 1/2"
 Fixed Panel Height = Overall Height Minus 5/16"

Kits Include the Following Components:



ITEM NO. **RLTG1XX**
Top Guide (Qty. 1)

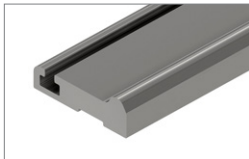


ITEM NO. **RLRDR1XX**
Round Roller
Included in **RLRD180** Kit
(Qty. 2)

OR



ITEM NO. **RLSQR1XX**
Square Roller
Included in **RLSQ180** Kit
(Qty. 2)



ITEM NO. **RLBT1XX**
65" Bottom Track (Qty. 1)



ITEM NO. **SUCD12XX**
40" Classic U-Channel
(Qty. 1)



ITEM NO. **CLSB3812**
82" Clear L-Shape Jamb
Seal Bumper
(Qty. 1)



ITEM NO. **RLWB2**
Ridgeline Door Bumpers
(Qty. 2)

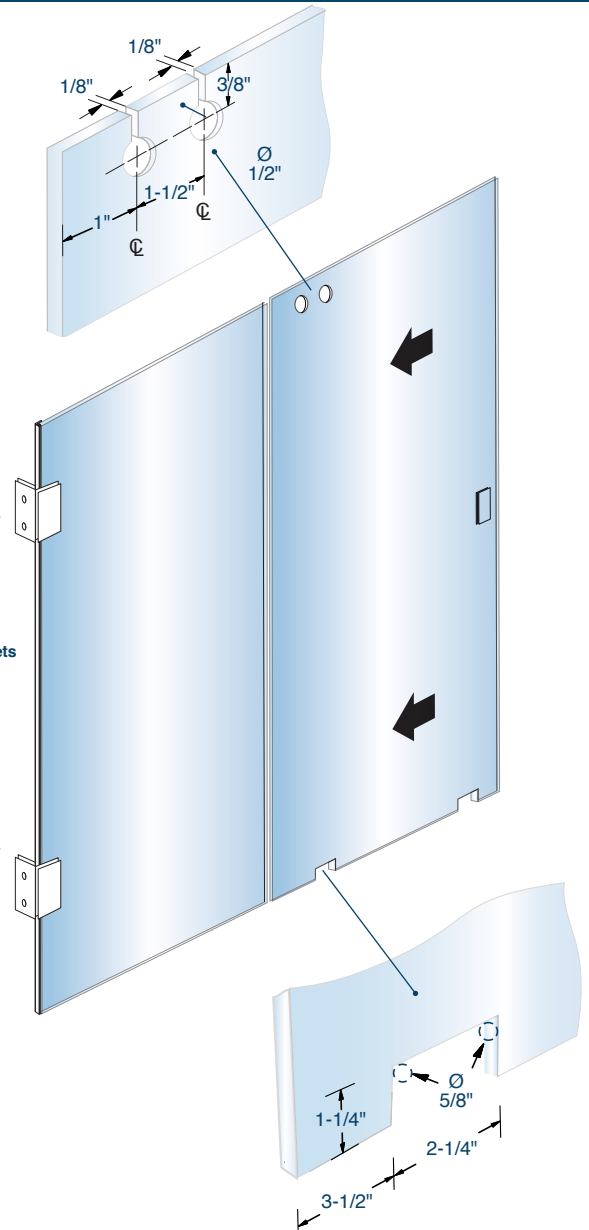


ITEM NO. **RLRDWB1XX**
Round Profile
Glass Clamp Flange Mount
(Sold Separately)



ITEM NO. **GLN90XX**
ITEM NO. **GLN91XX**
Square Profile
Glass Clamp Flange Mount
(Sold Separately)

Qualifying Wall Brackets
Square: GLN90 GLN91
Round: RLRDWB1



Ridgeline Series Frameless Sliding Shower System

Clean and remove any dirt or grime from your shower sill and wall areas where the new unit will be installed. **Carefully read these instructions completely and inventory all parts before starting installation.**

STEP
1

Bottom Track Preparation (Item# RLBT1)

Measure the opening at the base where the Bottom track will be mounted. **Please Note: The Ridgeline kit requires the sliding door is mounted to the inside, with the fixed glass mounted to the outside!** From the tight wall to wall measurement, deduct 1/16" to get the cut size. The Bottom Track is pre-drilled and has a small notch on each end, designed to allow water to exit. If the base is out of level, leave the notched portion of the Bottom Track for the "low side" of the base, allowing the water to drain. If the base is perfectly level, leave the notch on the sliding door side. Cut the Bottom Track to size. Position the Bottom Track in place at the base. With the Bottom Track in place, use the pre-drilled holes as a template to mark the holes for drilling into the base. Once the hole locations have been marked, leave the track in place for the next step.

STEP
2

U-Channel Preparation (Item# SUCD12)

Measure the width of the fixed glass at the bottom of the panel. Use this dimension and add 1/8" (clearance between the fixed glass and the wall). If using a different gap other than 1/8" between the glass and the wall, make the necessary change. Cut the provided U-Channel to this size. Drill the U-Channel in the desired locations (at least two holes). Place the cut-to-size, drilled U-Channel butting the wall at the fixed glass side, aligning and positioning it directly touching the Bottom Track. Mark the holes for drilling.

STEP
3

Bottom Roller Preparation (Item# RLRDR1 or RLSQR1)

Before the Bottom Track is fastened to the base, remove the phenolic guides from the Bottom Rollers and sleeve them into the upside down "T" shaped race in the Bottom Track. **Please Note: The guides must be inserted with the countersunk holes facing inside the shower.** Simply slip both Bottom Roller guides into the race in the bottom track to be used later in the installation process.

STEP
4

Fastening the Bottom Track (Item# RLBT1) and U-Channel (Item# SUCD12)

Drill the holes in the base using the appropriate (GMT Series) drill bit. Before mounting the Bottom Track and U-Channel, apply silicone into the holes in the base. Apply silicone the full length into the recessed underside of the bottom track. Do not overfill with silicone, as it will get messy. Fasten the Bottom Track first, then fasten the U-Channel.

STEP
5

Marking the Fixed Glass for Drilling (Item# GLN90/GLN91 or RLRDWB1)

Install the wall brackets (Item# GLN90/GLN91 or RLRDWB1) on the fixed glass. Using 1/4" setting blocks inside the U-Channel, test fit the fixed glass. Check the overall height of the fixed panel by measuring from the base to the top of the glass. Bring the glass close to the vertical wall to view the reveal between the glass and the wall. To achieve an even reveal and the correct height there may be some adjustments needed with the setting blocks in the U-Channel. Once the reveal is even, use a level to assure the glass is plumb. Mark the holes for drilling the clamps. Remove the fixed glass and set safely aside.

STEP
6

Install the Fixed Glass (Item# GLN90/GLN91 or RLRDWB1)

Drill the wall using the appropriate (GMT Series) drill bit. Set the fixed glass for the last time (silicone inside the U-Channel) and fasten the clamps to the vertical wall.

STEP
7

Installing the Bottom Rollers (Item# RLRDR1 or RLSQR1) and the Top Guide (Item# RLTG1)

Install the Bottom Rollers centered left to right in the notches on the bottom edge of the Sliding Glass. The bottom of the roller fittings should be all the way on the glass with the chamfered edge of the glass extending past the roller. The Bottom Roller must be mounted evenly along the bottom edge of the sliding door glass. Failure to mount the Hinge evenly on the glass may result in sliding issues. Fasten the screws by hand very tight. Set the fixed U-Shape side of the Top Guide on the Fixed Glass a couple of inches inward from the open end of the Fixed Glass. Remove the inside cover plate of the Top Guide in preparation of the Sliding Glass. Position the Guides (installed in step 3) together in the middle of the Bottom Track. Prepare to install the door by placing 3/16" setting blocks directly on the Bottom Track, spaced to accept the Sliding Glass to the outside of each roller. Stand up the glass on the setting blocks and align the Top Guide to the holes at the top of the Sliding Glass. Position the inside cover plate to the holes in the Sliding Glass and fasten the Top Guide to the glass.

STEP
8

Installing the Guide on the Bottom Rollers (Item# RLRDR1 or RLSQR1) and Adjusting the Sliding Glass Door

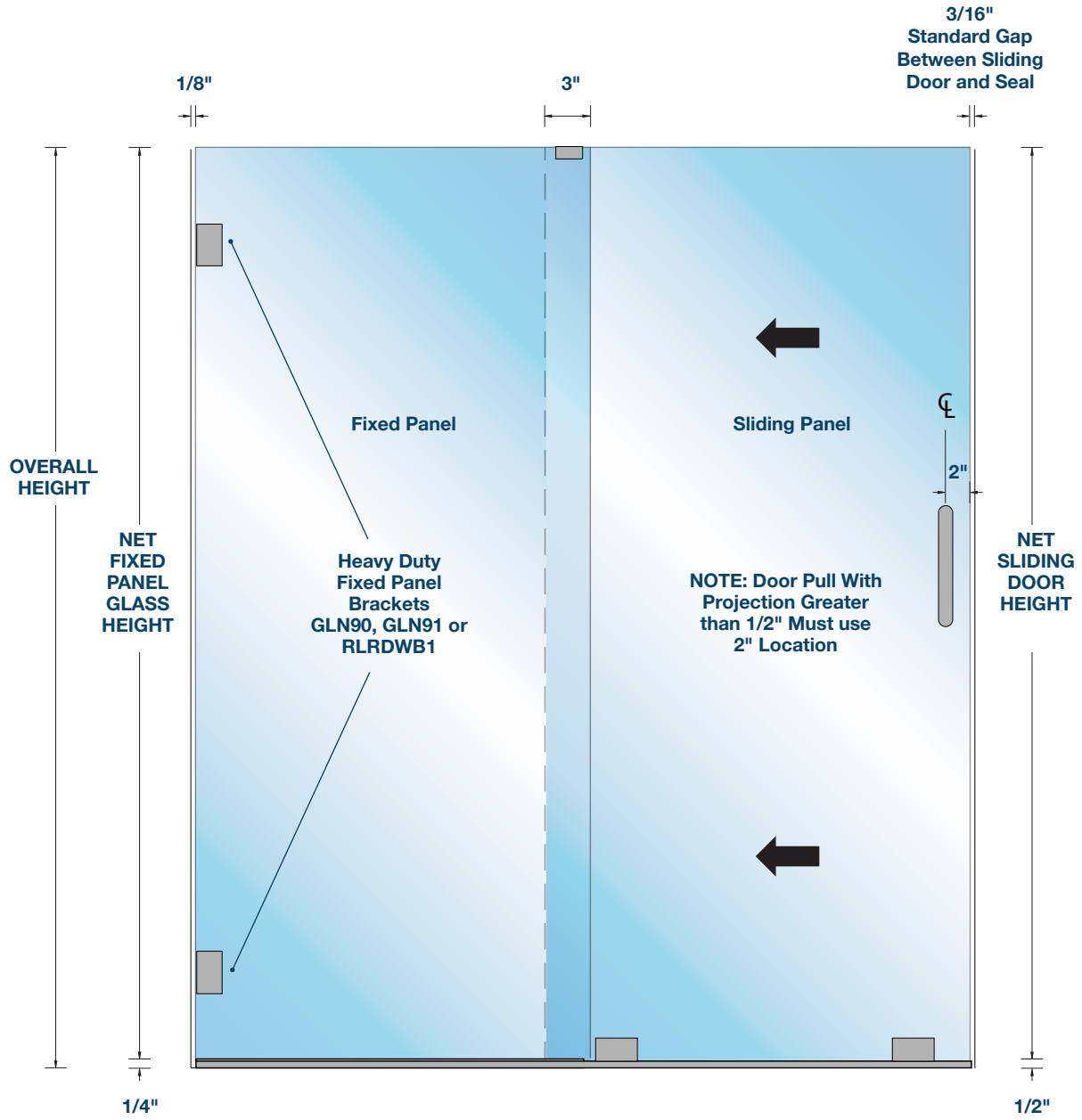
Prior to sliding the door for the first time, the guides must be fastened to the Bottom Rollers. Slide each guide into place in front of the Bottom Roller and align it to fit into the recess of the body. Tightly fasten to the guide to the Bottom Roller using the retainer plate and the two machine screws provided. Once both guides have been installed, the door can be tested by rolling to the handle side to check for correct wall alignment. If the Sliding Glass requires adjustment, use setting blocks or tapered shims from the Bottom Track to the Sliding Glass. Once setting blocks or shims are in place, loosen the screws clamping the Bottom Roller to the glass and raise or lower the glass for the correct wall reveal. Re-tighten the clamping screws on the Bottom Rollers as tight as possible by hand.

STEP
9

Install the Door Pull and the Installation is Complete

Elevation Diagram

(Not to Scale)



For Technical Support
Call Toll Free in the U.S.
(888) 295-4531