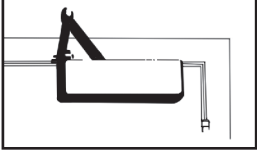
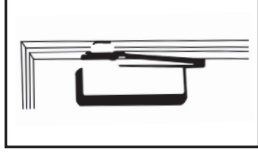


SM90 DROP PLATE TEMPLATING

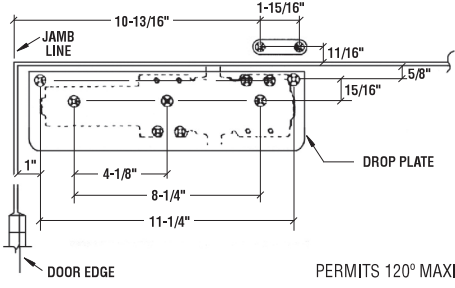
REGULAR MOUNT
(PULL SIDE)



PARALLEL MOUNT
(PUSH SIDE)



SM90 DROP PLATE - PULL SIDE



RIGHT HAND DOOR SHOWN.
LEFT HAND OPPOSITE

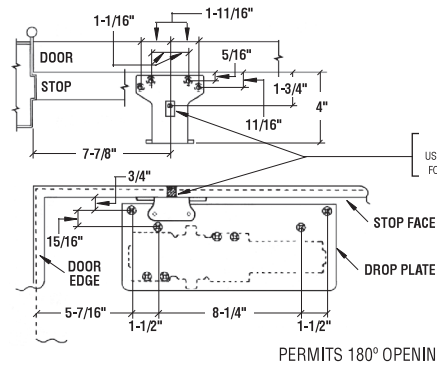
*Note: If pivots are used, increase these dimensions by 1/8".

PERMITS 120° MAXIMUM OPENING

SM90 DROP PLATE - PARALLEL ARM

IMPORTANT

BEFORE INSTALLING CLOSER, TURN BACKCHECK SELECTOR VALVE (FOUND ON OPPOSITE SIDE OF CLOSER FROM REGULATING SCREW SIDE) ALL THE WAY IN (CLOCKWISE)



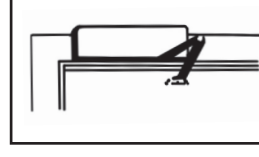
LEFT HAND DOOR SHOWN.
RIGHT HAND OPPOSITE

PERMITS 180° OPENING, BUTT SIZE 5X5 MAXIMUM

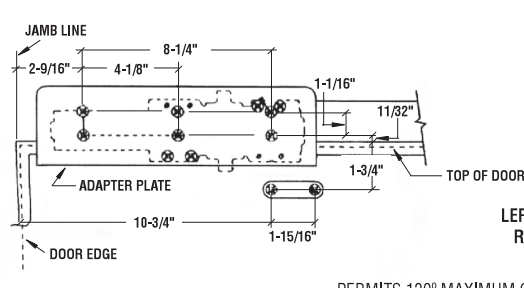
IMPORTANT
USE SPACER BLOCK PROVIDED FOR FIFTH SCREW 1/2 OR 5/8

SM90 DROP PLATE TEMPLATING

TOP JAMB MOUNT
(PUSH SIDE)



SM90 DROP PLATE - PUSH SIDE

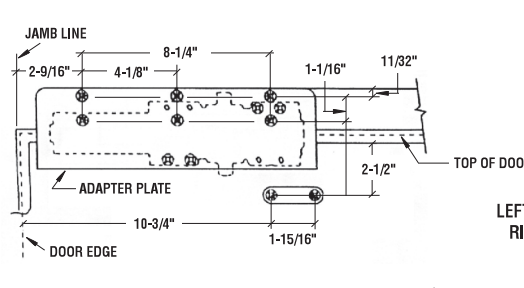


LEFT HAND DOOR SHOWN.
RIGHT HAND OPPOSITE

PERMITS 120° MAXIMUM OPENING

MAXIMUM REVEAL = 2-3/8"
FOR REVEALS 2-7/16" - 4-5/8"
USE OPTIONAL EXTENDED ROD NO. SM90AXTA

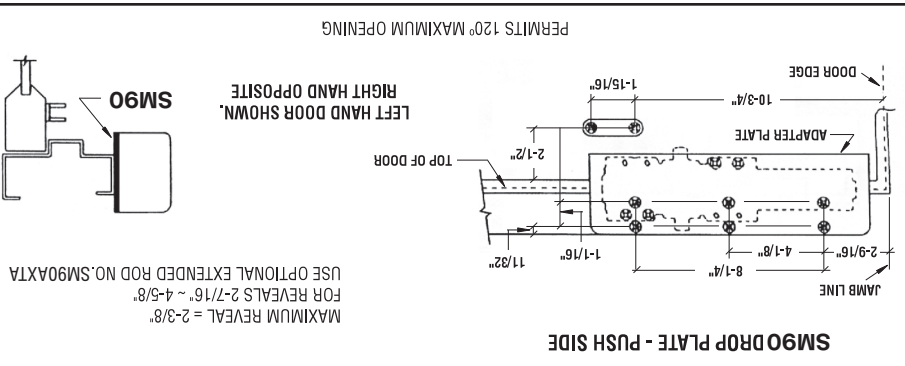
SM90 DROP PLATE - PUSH SIDE



LEFT HAND DOOR SHOWN.
RIGHT HAND OPPOSITE

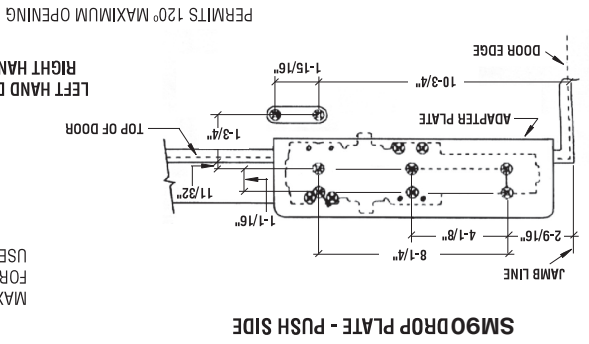
PERMITS 120° MAXIMUM OPENING

MAXIMUM REVEAL = 2-3/8"
FOR REVEALS 2-7/16" - 4-5/8"
USE OPTIONAL EXTENDED ROD NO. SM90AXTA



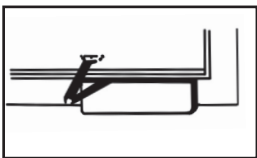
LEFT HAND DOOR SHOWN.
RIGHT HAND OPPOSITE

MAXIMUM REVEAL = 2-3/8"
FOR REVEALS 2-7/16" - 4-5/8"
USE OPTIONAL EXTENDED ROD NO. SM90AXTA



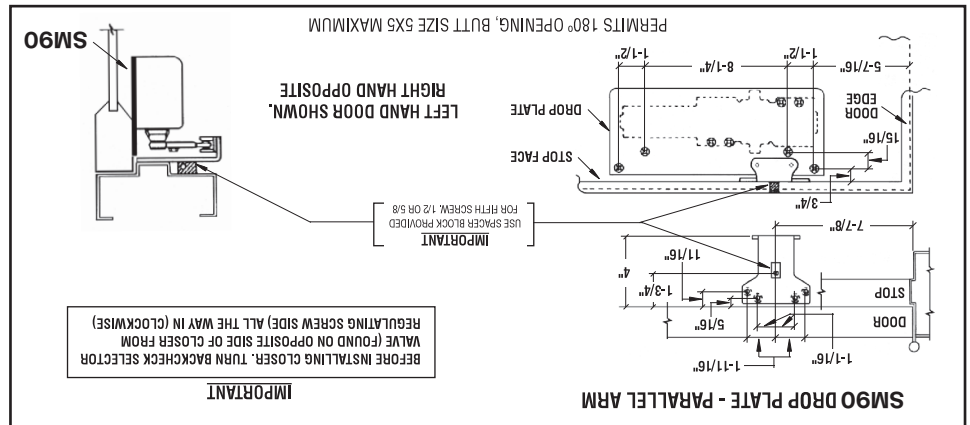
LEFT HAND DOOR SHOWN.
RIGHT HAND OPPOSITE

MAXIMUM REVEAL = 2-3/8"
FOR REVEALS 2-7/16" - 4-5/8"
USE OPTIONAL EXTENDED ROD NO. SM90AXTA



TOP JAMB MOUNT
(PUSH SIDE)

SM90 DROP PLATE TEMPLATING

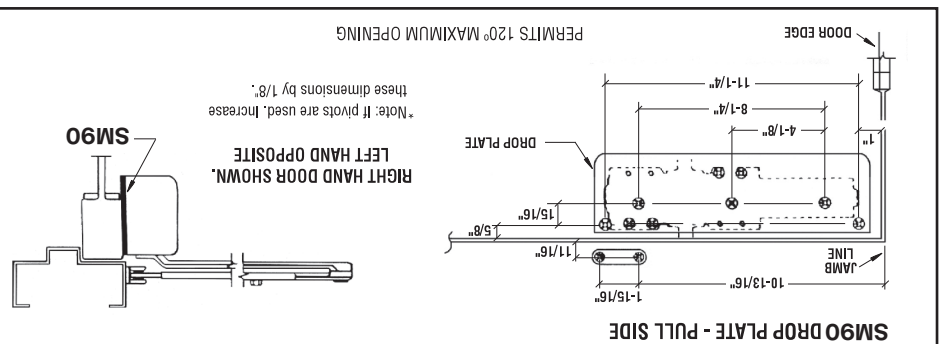


LEFT HAND DOOR SHOWN.
RIGHT HAND OPPOSITE

BEFORE INSTALLING CLOSER, TURN BACKCHECK SELECTOR VALVE (FOUND ON OPPOSITE SIDE OF CLOSER FROM REGULATING SCREW SIDE) ALL THE WAY IN (CLOCKWISE)

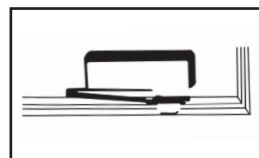
IMPORTANT

IMPORTANT
USE SPACER BLOCK PROVIDED FOR FIFTH SCREW 1/2 OR 5/8

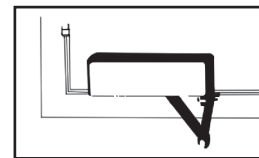


LEFT HAND DOOR SHOWN.
RIGHT HAND OPPOSITE

*Note: If pivots are used, increase these dimensions by 1/8".



PARALLEL MOUNT
(PUSH SIDE)



REGULAR MOUNT
(PULL SIDE)

SM90 DROP PLATE TEMPLATING