

FHC JUNIOR TRADITIONAL GLASS CLAMP

ITEM NO. TUC66

SPECIFICATIONS

Glass Sizes: 1/4" (6mm) tempered safety glass

Construction: Solid Brass

Closing Type: Free Swinging

Cutout Required: See Page 2

Requires: 3/4" (19mm) Diameter Hole

Includes: Gaskets

Use:

GASKET SPECIFICATIONS:

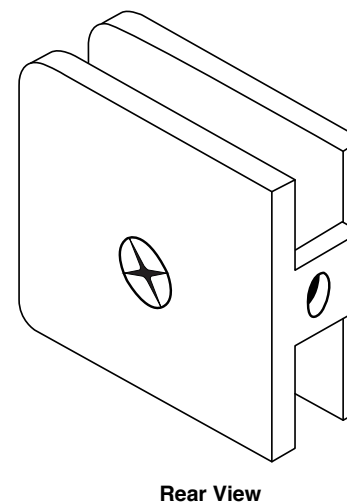
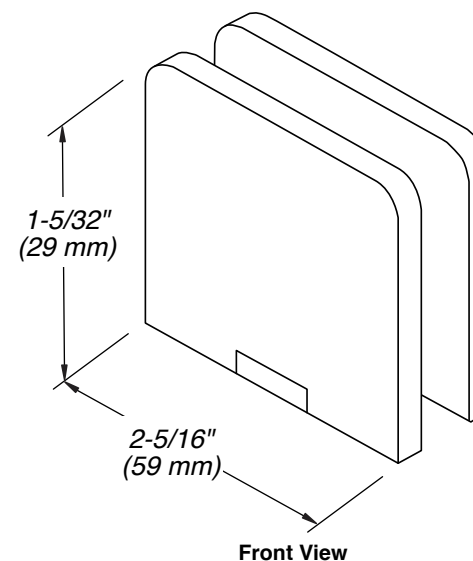
For 1/4" (6mm) Glass: Use One Gasket On Each Side

GLASS INSTRUCTIONS:

Only use tempered safety glass. To prevent damage to the clamp finish during installation, **do not** use power tools when installing these clamps.

CARE & CLEANING GUIDELINES:

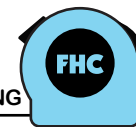
For best results, keep the following recommendations in mind when caring for your FHC shower door hardware. Your shower door should be dried daily with a soft towel or cloth to ensure its original finish. Do not use harsh cleaners or chemicals on the hardware, as many of the components are coated with a clear lacquer that will become damaged beyond repair. Always test your cleaning solution in an inconspicuous area prior to cleaning the entire hardware surface. Wipe surfaces clean using a soft, dampened cloth or sponge, and rinse completely with warm water immediately after applying the cleaning solution. Use only small amounts of liquid, gentle, cleaner. **Never** use abrasive products, sponges, or wire scrub brushes while cleaning hardware.



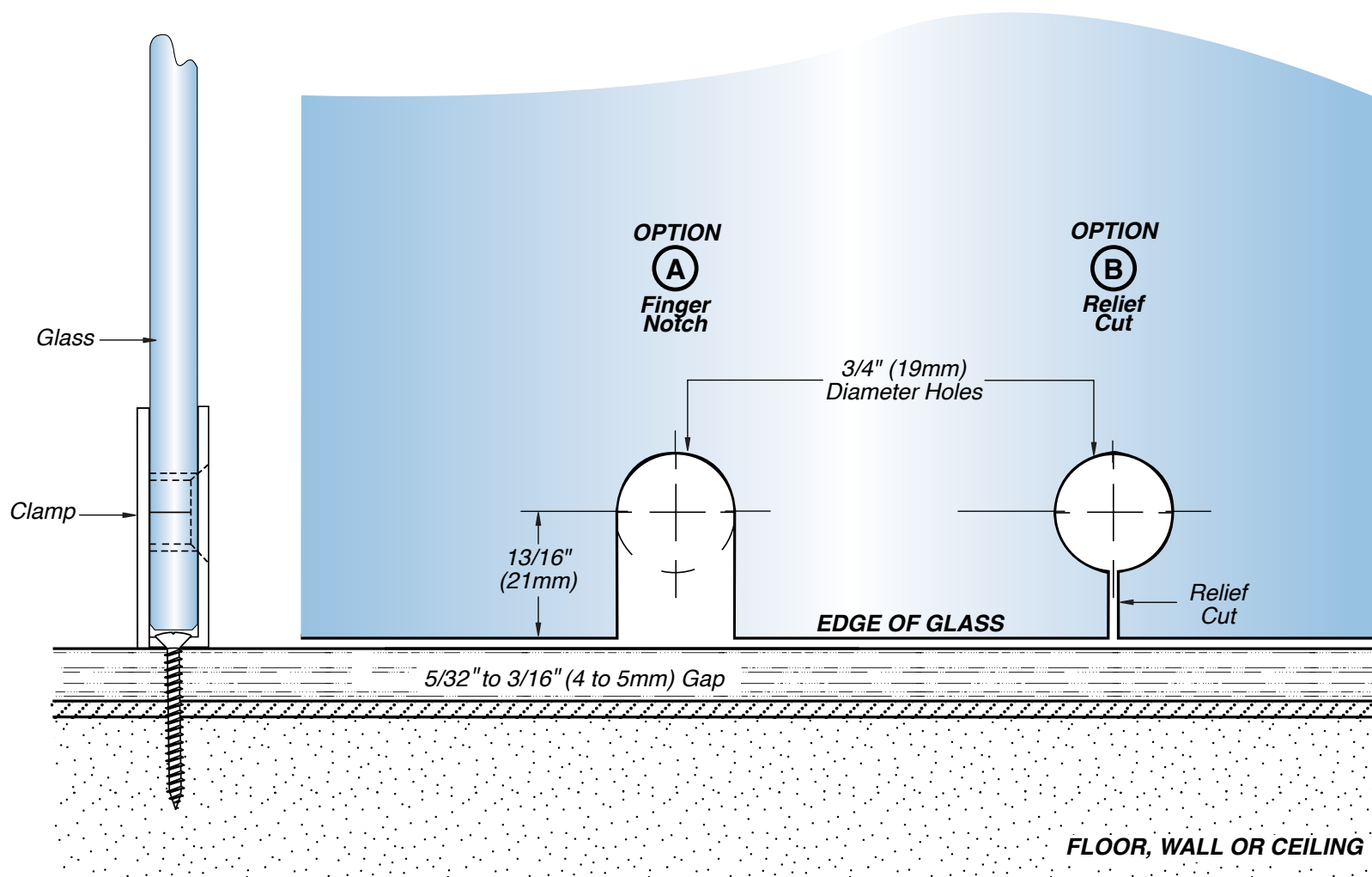
FHC JUNIOR TRADITIONAL GLASS CLAMP

ITEM NO. TUC66

DO NOT MEASURE / SCALE DRAWING
USE DIMENSIONS SHOWN



IMPORTANT:
Measure from Finished
Edge of Glass



USE ONLY
MONOLITHIC
TEMPERED GLASS



For Technical Support
Call Toll Free in the U.S.
(888) 295-4531

FHC
FRAMELESS HARDWARE COMPANY
THE GLAZING SUPPLY COMPANY
EXPERIENCE AND INNOVATION