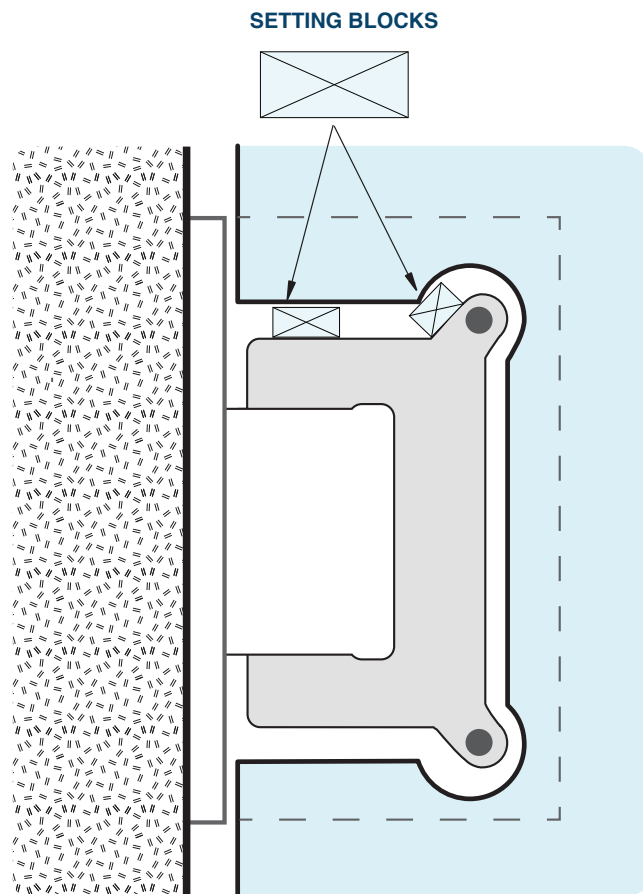


Frameless Shower Hinge Troubleshooting

WALL MOUNTED HINGE BLOCKING

From the National Glass Association's
Frameless Shower Enclosure Design and Installation Manual

- 1) When installing the clamping screws on frameless shower door hinges, be sure to tighten them by hand only. **Do Not Tighten Hinge Clamping Screws Using Power Tools!**
 - 2) Alternate back and forth tightening each screw until snug. Now tighten by hand as tightly as possible.
 - 3) The door can now be operated. To compensate for initial gasket compression, re-tighten the screws a second time after about 10 minutes.
 - 4) Prior to leaving the site, tighten the screws one final time, to assure the crucial clamping force is maintained. (The recommended torque setting is 45 lb-in. per screw)
- 5) **NOTE:** As a preventive measure, or if the shower door is falling out of adjustment, setting blocks can be used to "pin" the glass in place to make sure the glass doesn't slip. Use a hard setting block material between the body of the hinge and the cutout in the glass to lock it into position and prevent slippage. Situations when you may consider blocking inside the hinge include:
 - Large commercial projects when heavy use is expected
 - Large doors using glass-to-glass hinges
 - Glass cutouts which are on the large end of tolerance range



Please contact FHC if you have questions about your installation using FHC Shower Hardware.