



Advance Series Headers

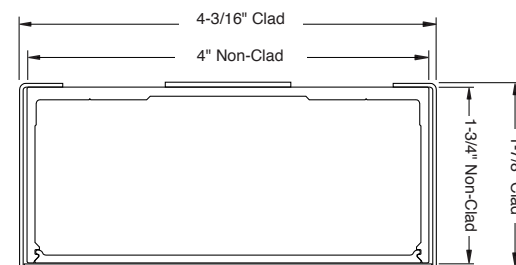
for OHCC Overhead Concealed Closer & Walking Beam Pivot Applications

- Clad and Non-Clad Finishes In Stock
- Custom Fabrication for Special Hardware Requirements is Available
- Stocked in 4", 4-1/2", and 6" Profiles, 36" and 72" Lengths
- Custom Sizes and Finishes Also Available
- Snap In Cover Plates Included
- Select From Many Architectural Finishes
- Standard 2-3/4" Pivot Points
- Headers Do Not Include Door Closers
- Both Single and Double Door Headers are Compatible with Most Overhead Closers



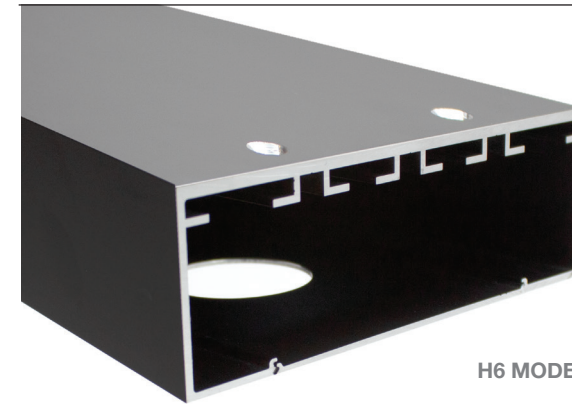
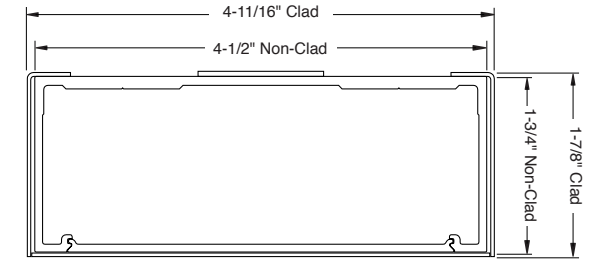
H4 MODEL

1-3/4" x 4" Aluminum Door Headers



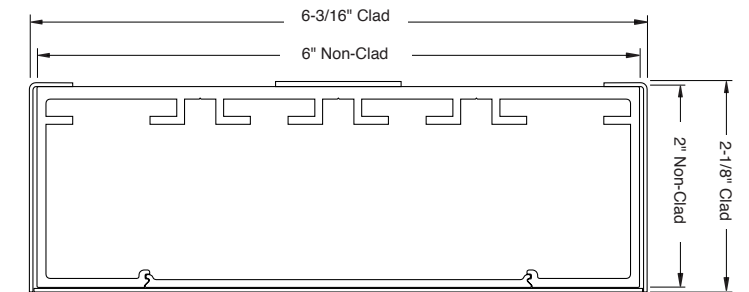
H45 MODEL

1-3/4" x 4-1/2" Aluminum Door Headers



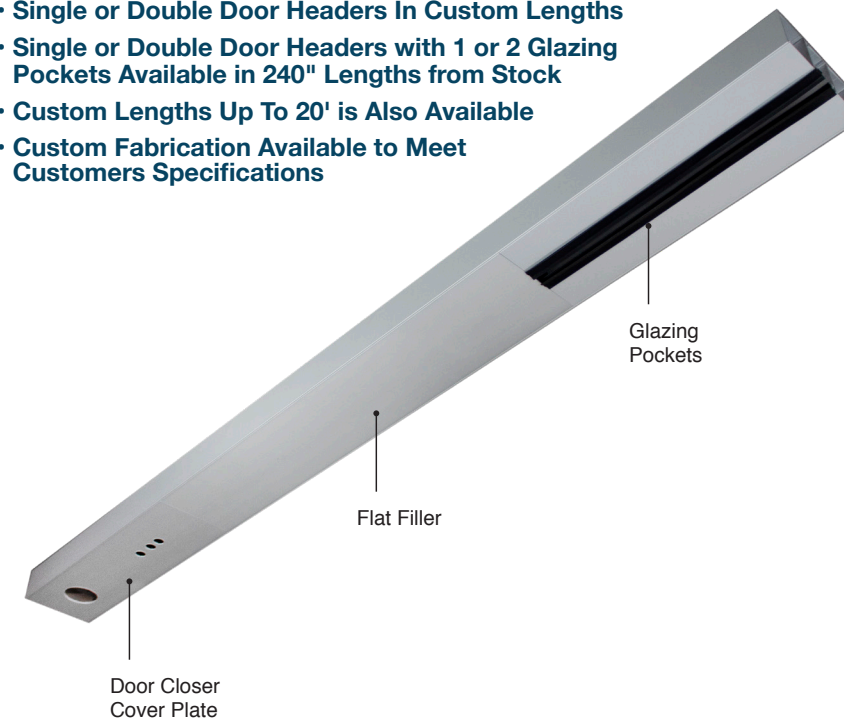
H6 MODEL

2" x 6" Door Aluminum Headers



Custom Fabrication for Various Applications

- Single or Double Door Headers In Custom Lengths
- Single or Double Door Headers with 1 or 2 Glazing Pockets Available in 240" Lengths from Stock
- Custom Lengths Up To 20' is Also Available
- Custom Fabrication Available to Meet Customers Specifications



PRODUCT INFO/SPECIFICATIONS:

- CSI Format Specifications are Available for Download
- Optional End Caps If Required are Sold Separately
- Includes Snap In Cover Plate Factory Prepped for Overhead Closers
- FHC Follows GANA Guidelines for Maximum Door Height and Widths. Reference the FHC Herc-Door™ Sizing Guidelines.