

FHC Classic 140S Series Single Sliding Door Kit

For Wall or Ceiling Mount

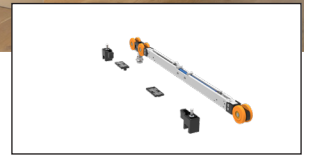
- Soft Close Feature Sold Separately
- Single Panel Slider Kit for Both Wall and Ceiling Mount Applications
- Max. Door Weight 310 lbs for Use With 3/8", 1/2" or 3/4" Tempered Glass
- Available in Two Finishes, Satin Anodized and Matte Black
- Clamp Covers and End Caps Completely Conceal the Mechanism
- ± 1/8" Adjustable Wall Brackets
- Glass Fabrication Not Required
- Ball Bearing Rollers for Smooth Operation
- 118" Length



CSI DIVISION 08

SECTION

08 3200



ITEM NO. **CL140SFTCLS**
Soft Break (Optional)



Use Only Monolithic Tempered Glass

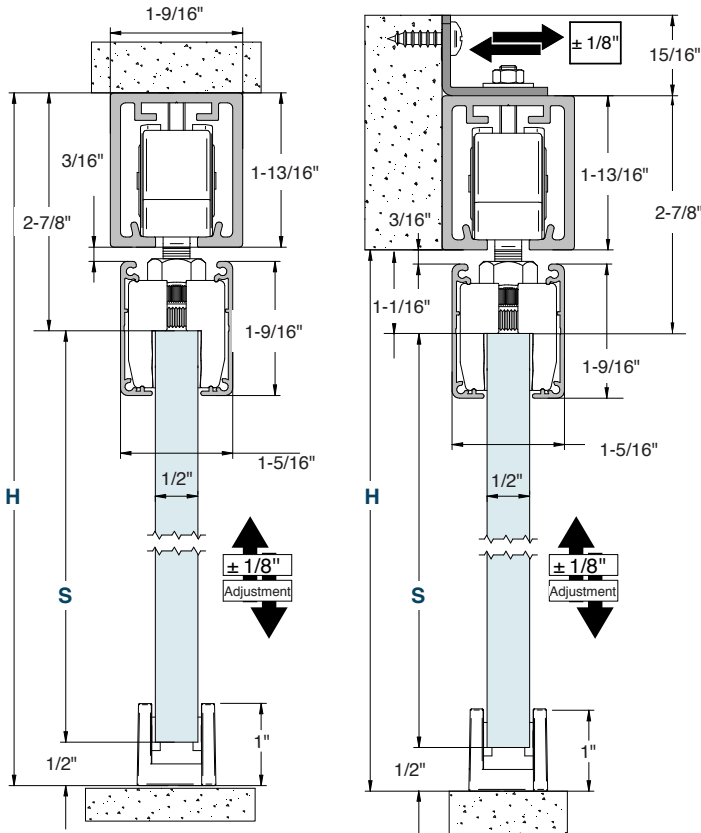
Available Finishes



FHC CLASSIC 140S SINGLE SLIDING DOOR KIT

ITEM NO.	FINISH
CL140SSA	Satin Anodized
CL140SMB	Matte Black

Kits Include: 118" (3 m) Stock Lengths and Must Ship Common Carrier.



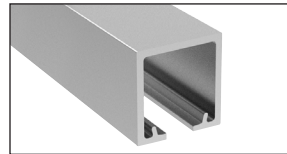
CEILING MOUNT

Slider Panel (S) Glass Deducts Height (H) Minus 3-3/8"

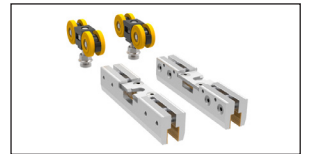
WALL MOUNT

Slider Panel (S) Glass Deducts Height (H) Minus 1-9/16"

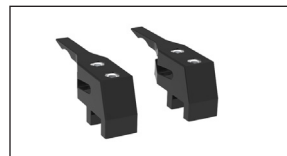
Kits Include the Following Components:



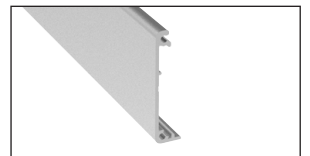
ITEM NO. **CL140SEXTXX**
One Top Track 118" in Length



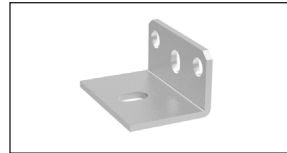
ITEM NO. **CL140SRLRS**
Two Hanger/Roller Assemblies



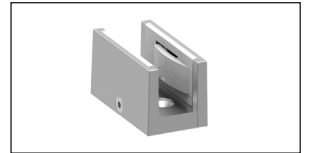
ITEM NO. **CL140STP**
One Set of Roller Stops



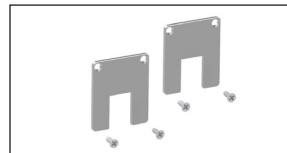
ITEM NO. **CL140CVRXX**
One Clamp Cover at 118" in Length (Field Cut)



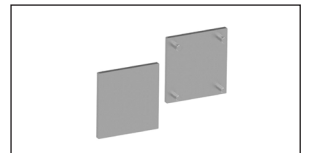
ITEM NO. **CL140BKT**
Fifteen Top Track Support Brackets



ITEM NO. **CL140GD**
One Bottom Floor Guide



ITEM NO. **CL14012XX** (for 3/8" & 1/2" Glass)
ITEM NO. **CL14020XX** (for 3/4" Glass)
One Set of Hanger End Caps



ITEM NO. **CL140ECXX**
One Set of Top Track End Caps



EXPERIENCE AND INNOVATION

P.O. Box 1906, South Gate, CA 90280 Toll Free: (888) 295-4531 | Fax: (323) 336-8307 | Web: fhc-usa.com