

Las Vegas Had A Choice. And They Chose ... FHC[®]

FHC MANUFACTURES AND SUPPLIES INNOVATIVE CUTTING
EDGE PRODUCTS OFFERING EXPEDITED LEAD TIMES,
SUPPORTED BY FIRST CLASS TECHNICAL SUPPORT.

FHC PORTFOLIO:

- Fontainebleau Las Vegas
- MGM Grand Remodel
- Wynn Resort Remodel
- The Virgin Hotel Las Vegas
- TAO Night Club Las Vegas
- WNBA Las Vegas Aces Practice Arena
- Nusr-Et Las Vegas Restaurant (Salt Bae)
- UNLV Medical Education Building
- Hilton Grand Vacations Club Elara
- Brew Dog Las Vegas
- Summit Club House
- Resorts World
- Sahara Hotel
- Project 63

AND MANY MORE MAJOR PROJECTS
ACROSS THE COUNTRY!

THE INDUSTRY HAD A CHOICE AND
THEY CHOSE FHC FOR...



BEST HARDWARE
PRODUCTS & SYSTEMS



BEST INNOVATION
FOR INSTALLERS



The Glazing
Supply Company

EXPERIENCE AND INNOVATION

4361 Firestone Blvd. South Gate, CA 90280

Toll Free: 888 295-4531 | Fax: (323) 336-8307

FHC-USA.COM | info@fhc-usa.com

FHC's Professional Brands

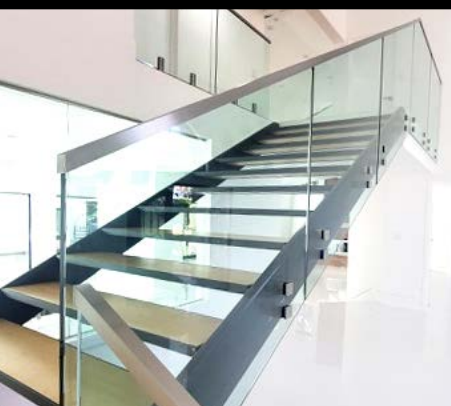
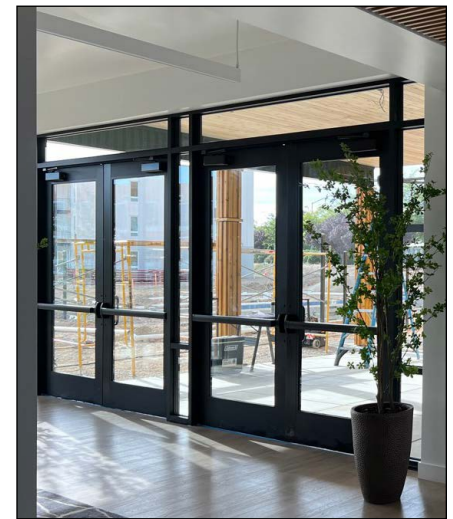
Product innovation remains a foundational pillar of FHC's business model, it's in our DNA. But "Innovation" means more than simply creating something new - it means creating value. We listen to the industry, and create solutions delivering better quality products, with shorter lead-times, and faster Installations.



FHC Advance Series HERC-DOOR® Frameless Door Rail System is designed, engineered, and manufactured in the U.S.A. and presents glaziers and fabricators with an innovation solution that provides faster, easier installation with accelerated lead times.

Our **FHC ACHIEVE®** mechanical shim set is a dry attachment system that is removed as easily as it's installed. Designed and optimized to reduce stress on monolithic and laminated tempered glass, this is the next generation of Glass Railing Systems.

FHC Storefront and Framing Systems feature screw-spline assembly for simple fabrication and labor saving installation. Our doors include hardened cast aluminum blocks with mechanical fasteners, and deep penetrating welds at all corners. All **FHC Systems** have been tested to the latest AAMA standards by Architectural Testing Laboratory for water, air, and structural performance. Our aggressive lead time on custom doors and next day availability on stock items will keep your project ahead of schedule and under budget.



The Newest & Most Innovative Catalogs in the Industry!

- » **FAH23R** Architectural Hardware
- » **FGR24** Frameless Glass Railing
- » **FSH24** Frameless Shower Door Hardware

View it online at FHC-USA.COM or request a copy!

